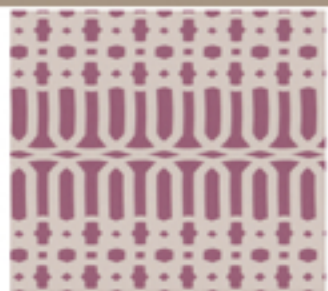
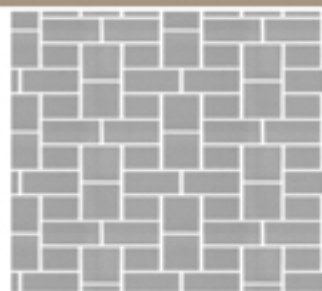


SLEEP STYLE III



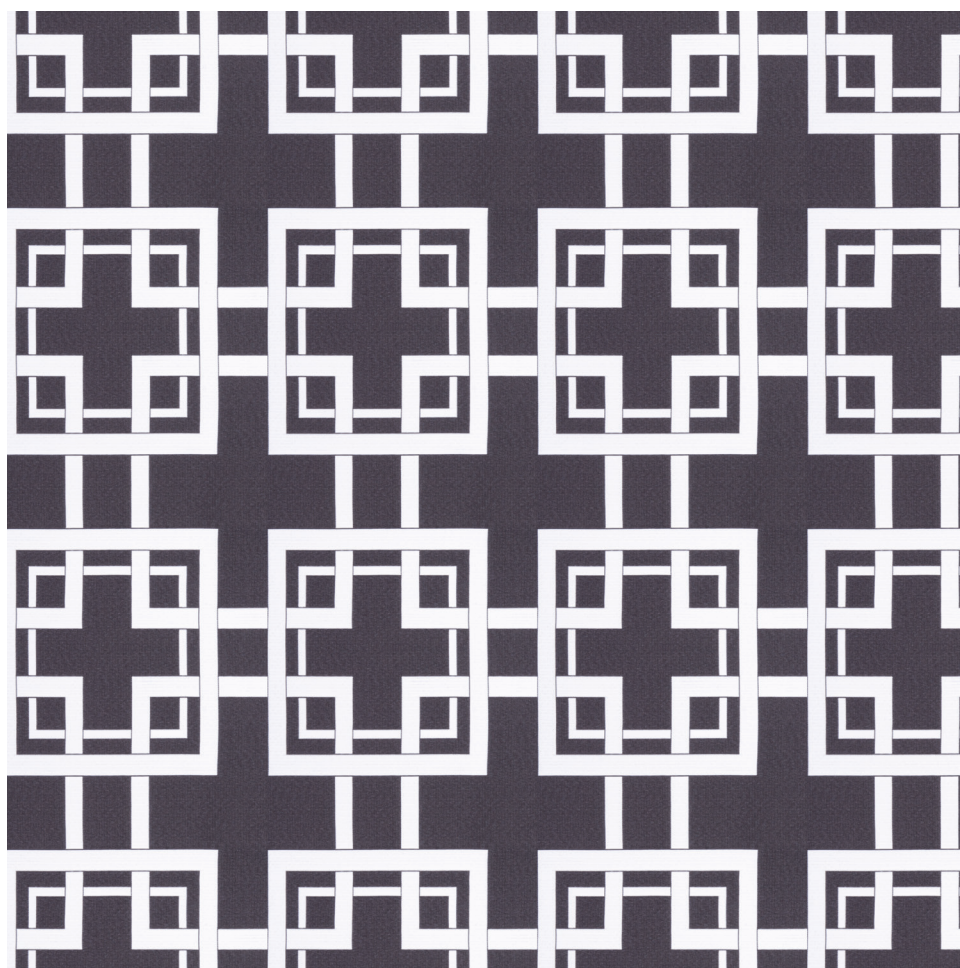
MAZE | DOMINO | IRON GATE | UMBRELLA | AERIAL VIEW



MAZE



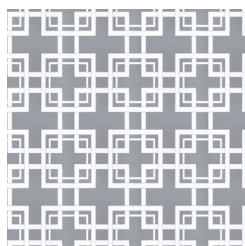




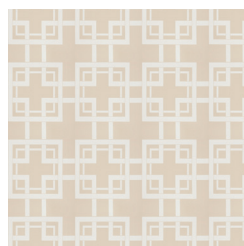
MAZE

BLACK & WHITE

112" Wide
100% Polyester
Approx. Repeat: V-15", H-15"
Visa Permanent Soil & Stain Finish
Reversible Fabric



GREY



SAND

Unlined Bed Blanket with
extra full drop and square corners
(shown in Maze - Black & White)



Pillow Sham with mock flange
(shown in Extent - White)



18" X 18"
Tufted Pillow with knife edge
and covered button
(shown in Sylvan - Onyx)

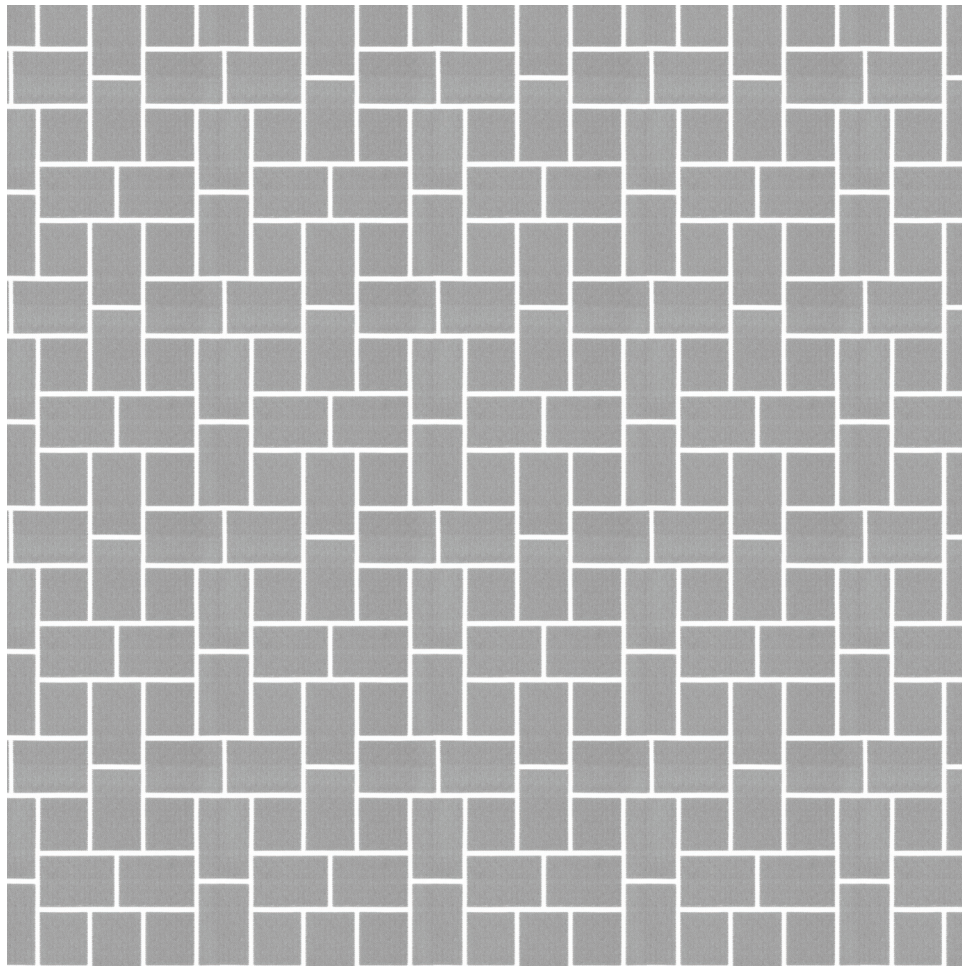




DOMINO



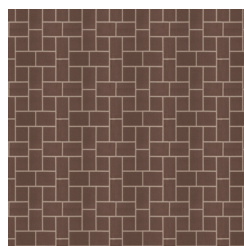




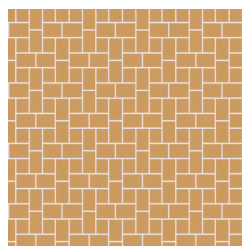
DOMINO

GREY

112" Wide
100% Polyester
Approx. Repeat: V-6.10", H-6"
Visa Permanent Soil & Stain Finish
Reversible Fabric



CHOCOLATE



GOLD

Unlined Bed Scarf
(shown in Domino - Grey)



Unlined 1/2 Coverlet
(shown in Exeter - Fusion)



24" X 10"
Rectangle Pillow with knife edge
(shown in Philcade - Denim)



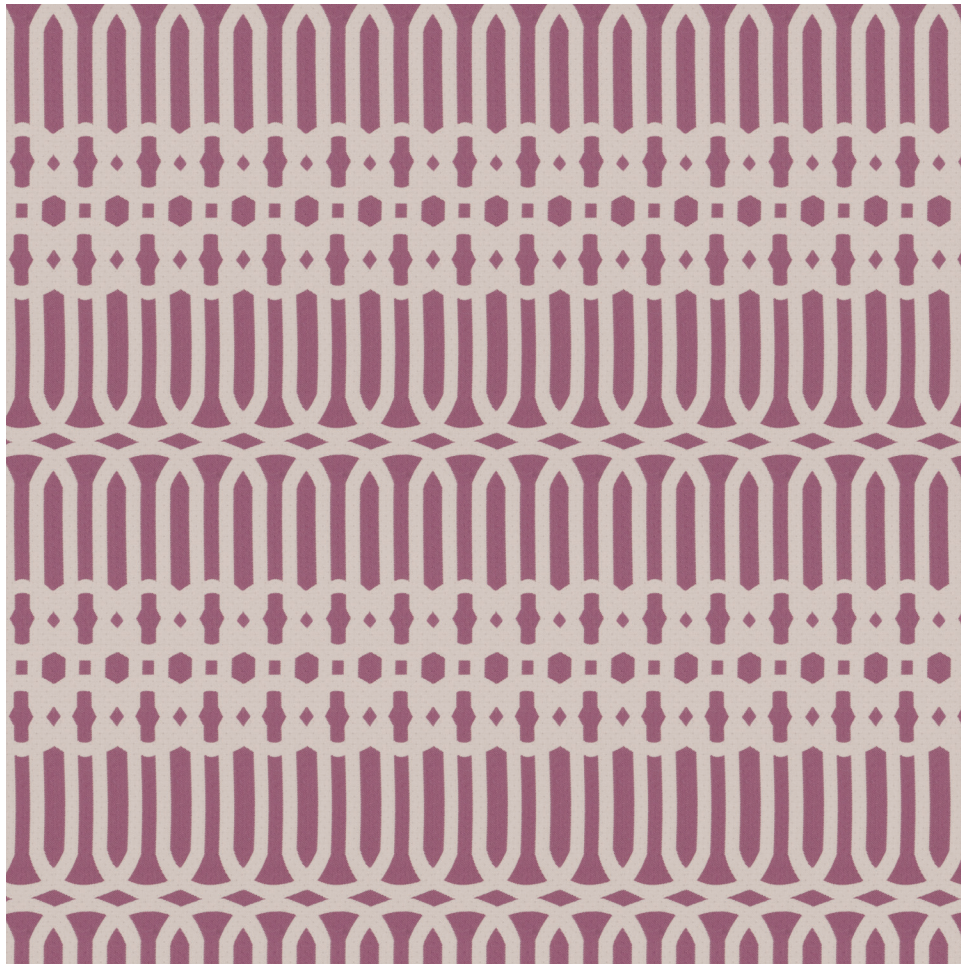
(wallcovering: 64012W Structure - Indigo 08)



IRON GATE

The image features a central brown rectangular band. Above and below this band are decorative borders. Each border consists of a repeating pattern of interlocking circles and triangles, with the circles in a light beige color and the triangles in a dark purple color.





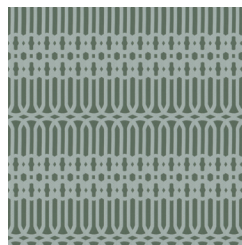
IRON GATE

MERLOT

112" Wide
100% Polyester
Approx. Repeat: V-13.4", H-1.75"
Visa Permanent Soil & Stain Finish
Reversible Fabric



CHOCOLATE



SPRUCE

Unlined Bed Blanket with
full drop and slit corners
(shown railroaded in Iron Gate - Merlot)



18" x 18"
Pillow with knife edge
(shown in Westhope - Sunset)



24" X 10"
Rectangle Pillow with knife edge
(shown in Exeter - Cocoa and Beet Root)



(wallcovering: 64010W Moxie Metal - Gold Luster 05)



UMBRELLA

The image features a central horizontal band of solid brown color. Above and below this band are decorative borders consisting of a repeating geometric pattern of teal and white shapes, resembling stylized interlocking triangles or a woven texture. The word "UMBRELLA" is centered within the brown band in a white, uppercase, sans-serif font.

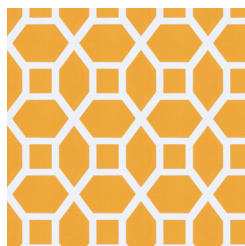




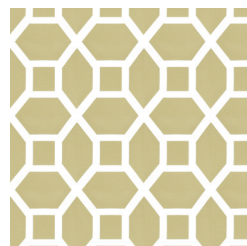
UMBRELLA

TEAL

112" Wide
100% Polyester
Approx. Repeat: V-15.2", H-15"
Visa Permanent Soil & Stain Finish
Reversible Fabric



GOLD



MOSS

Unlined 1/2 Coverlet
(shown railroaded in Umbrella - Teal)



36" X 18"
Rectangle Pillow with knife edge
(shown in Aerial View - Aqua)

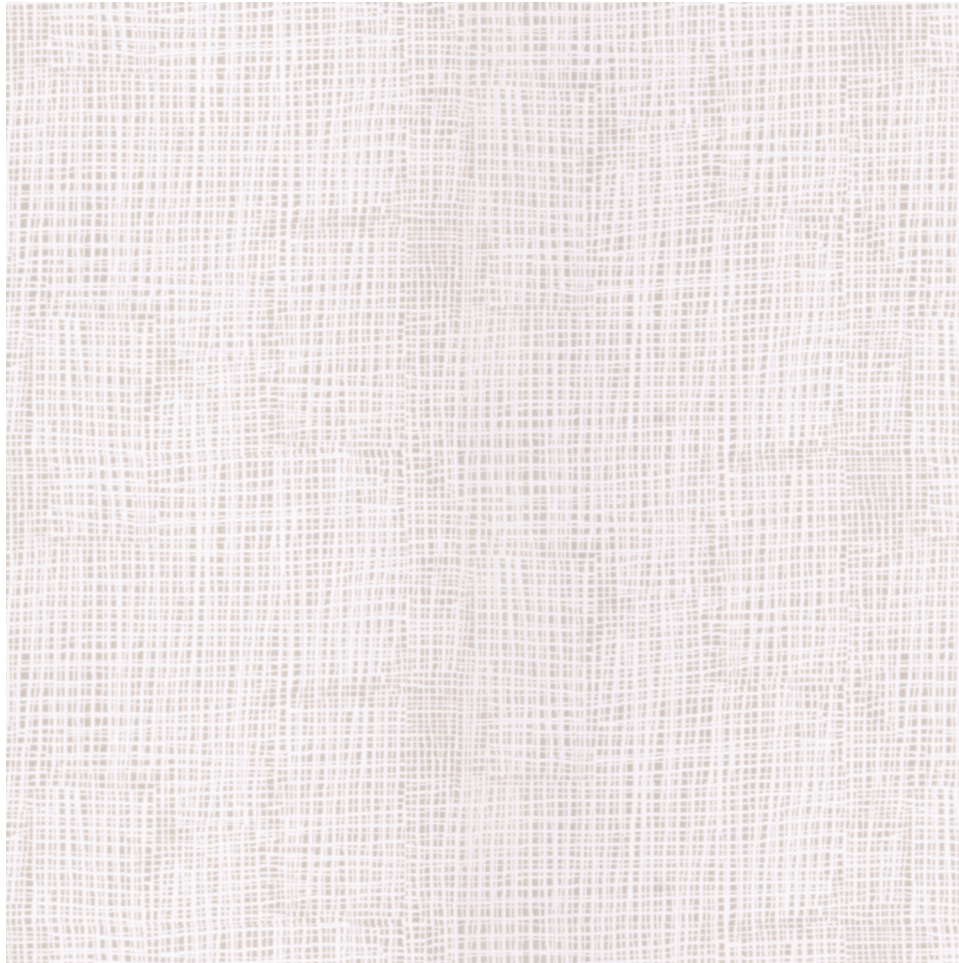


24" x 10"
Rectangle Pillow with knife edge
(shown in Kasbah - Navy)



AERIAL VIEW

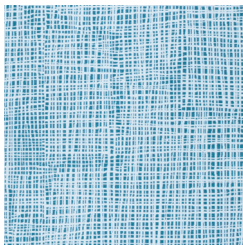




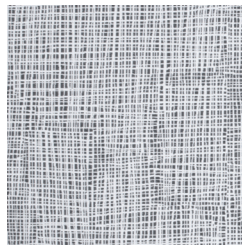
AERIAL VIEW

SAND

112" Wide
100% Polyester
Approx. Repeat: V-30.5", H-15.5"
Visa Permanent Soil & Stain Finish
Reversible Fabric



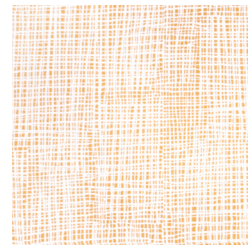
AQUA



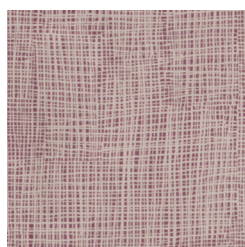
BLACK WHITE



CHOCOLATE



GOLD



MERLOT



MOSS



SPRUCE

Unlined 1/2 Coverlet
(shown in *Aerial View* - Sand)



20" x 20"
Pillow with knife edge
(shown in *Alberta* - Topaz)



36" x 18"
Rectangle Pillow with self welt
(shown in *Dedication* - Antique)



NORMAL CARE GUIDELINES

Please follow the listed **WASHING** care guidelines to maintain optimal performance, durability, and quality of product:

- Ensure washing machine is free of burrs or sharp objects that can cause snagging.
- Wash with like colors and products. Do not combine with other products (i.e. towels, sheets, etc).
- Do not overload washing machine. Stay below recommended load size. It is recommended that no more than 80% of rated washer capacity be used.
- Machine wash, warm (120°-160° F).
- Use non-chlorine bleach if needed. Do not use chlorine bleach.

Please follow the listed **DRYING** care guideline to maintain optimal performance, durability and quality of product:

- Load dryers to 50% of rated capacity. Do not overload dryer.
- Do not use any fabric softeners.
- Ensure dryer is free of burrs or sharp objects that can cause snagging.
- Dry with like colors and products. Do not combine with other products (i.e. towels, sheets, etc).
- Set heat cycle for a fabric temperature of 180°-200° F.
- Fabric must be dry before cool-down cycle starts. Drying time usually varies between 10-20 minutes, depending on extraction, load size, and temperature.
- The fabric and walls of the dryer must be cooled down to room temperature before the dryer is stopped. Approximate cool-down times will range from 8-15 minutes. It is recommended that fabric be cooled to 100° F before removing.
- The handling procedures should be utilized to obtain optimum flat-dry results:
 - Fabrics should be unloaded from the dryer immediately after cycle is complete.
 - Fabrics should be draped or spread across a cart, or folded as unloaded from the dryer.
 - Fabrics should be stacked flat.
 - Fabrics should be folded neatly, stacked by size and placed in an adequate storage area.
 - Standard practice allowing 24-hour "shelf time" will enhance appearance.
- Iron on low if needed.