



SIGNATURE

Guestroom Carpet



BATISTE

ZIP ZONE



NEBULOUS



ULTIMATE



CAST IRON



ESSENTIAL



WEATHERED



BACK DROP



POLISHED



CHOCOLATE BEAN



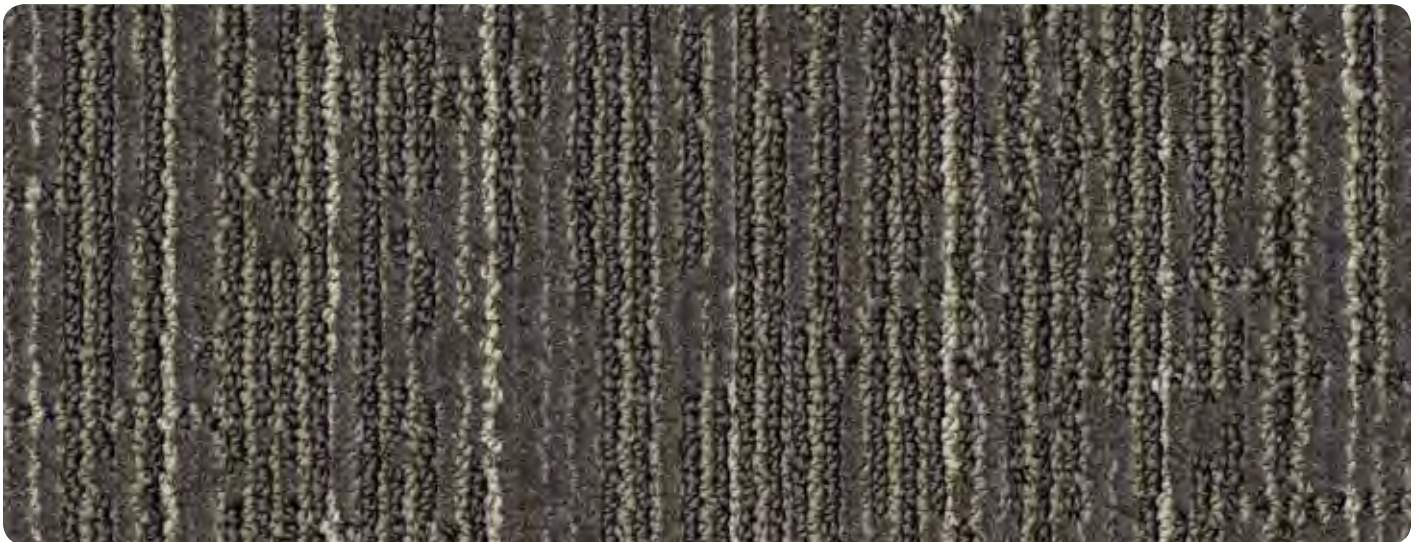
FLOORS FOR
SIGNATURE
SPACES





A) 3188 B) 3140 C) 3007

ZIP ZONE



A) 3143 B) 3188 C) 3140

NEBULOUS



A) 3299 B) 3213 C) 3126

CHOCOLATE BEAN





A) 3250 B) 3249 C) 3507

WEATHERED



A) 3193 B) 185.464 C) 3197

CAST IRON



A) 3197 B) 3464 C) 3507

ULTIMATE





A) 3250 B) 3723 C) 3205

ESSENTIAL



A) 3204 B) 3201 C) 3216

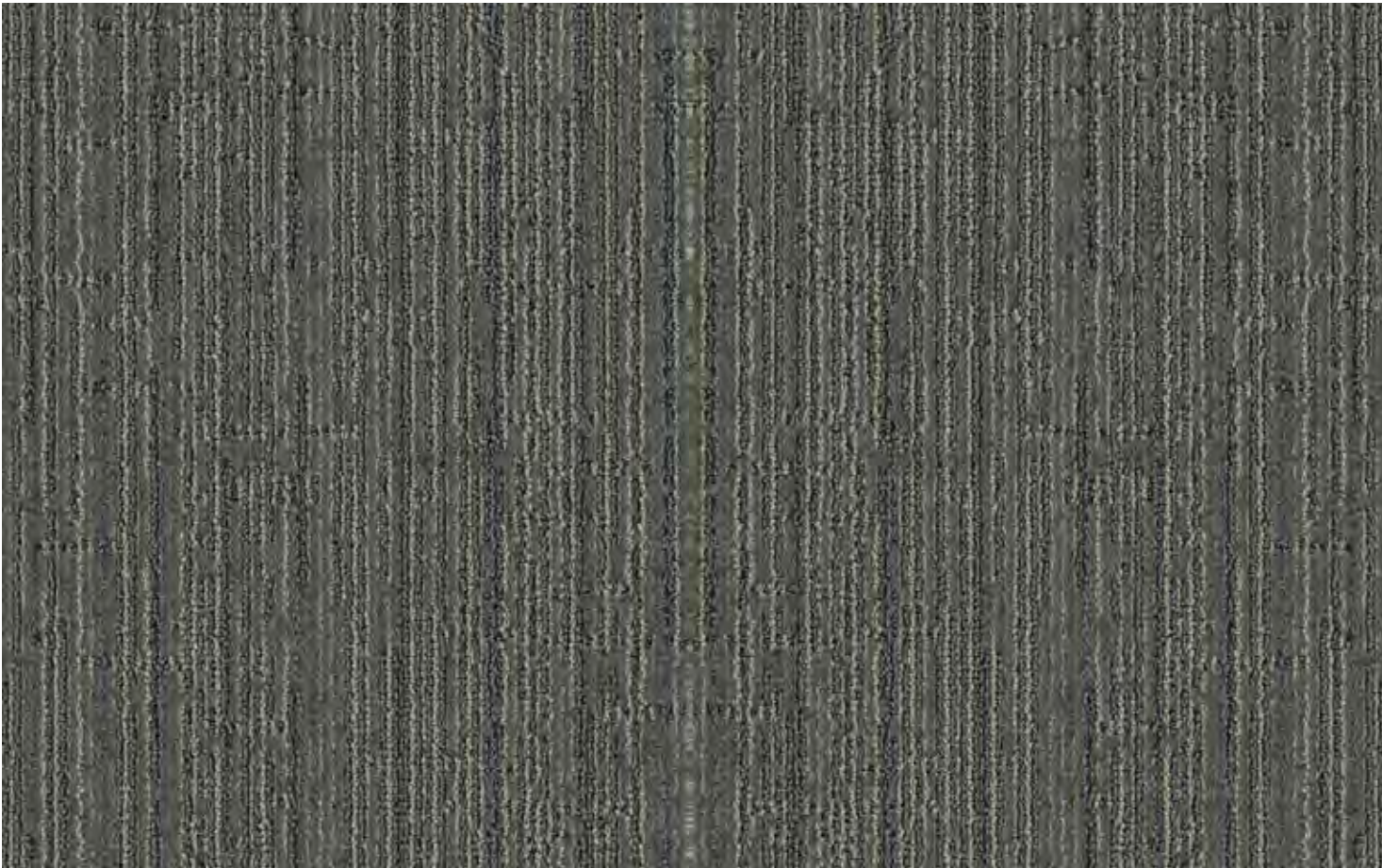
BACK DROP



A) 3213 B) 3236 C) 3140

POLISHED





A) 3197 B) 3464 C) 3507

ULTIMATE

BATISTE

CONSTRUCTION	1/10 INFINITY TIP SHEAR
PILE FIBER	100% SOLUTION DYED NYLON
STITCH RATE	13.3 SPI
PILE HEIGHT	.193
TUFTED PILE WEIGHT	32 oz
DYE METHOD	SOLUTION
PRIMARY BACKING	WOVEN POLYPROPYLENE
SECONDARY BACKING	ACTIONBAC
WIDTH	12' UP TO 15' AVAILABLE
DENSITY FACTOR	5,969
WEIGHT DENSITY FACTOR	191,005
WARRANTY	TEN YEAR LIMITED WEAR
SOIL & STAIN TREATMENT	SCOTCHGARD
PATTERN REPEAT	12" W x 12" L

TESTING DATA	
ASTM E-648 Flooring Radiant Panel:	Class I
DOC-FFI-70 Methenamine Pill Test:	Passes AATCC 134
Electrostatic Propensity:	Less than 3.5 KV
E-662 Smoke Chamber:	Less than 450

Available in 36 oz with 1000 syd minimum



FEATURED COLORWAY: ULTIMATE



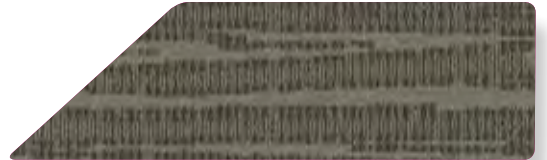


MATCH STIX

MOON GLASS



FOSSIL



PLAYA



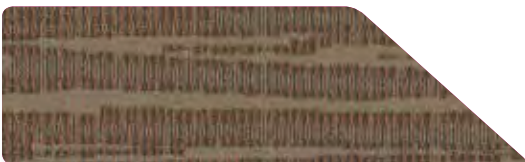
WET STONE



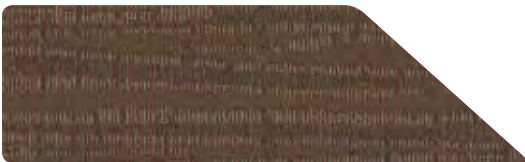
COBALT



QUARTZ



DOLOMITE



FLINT



MICA

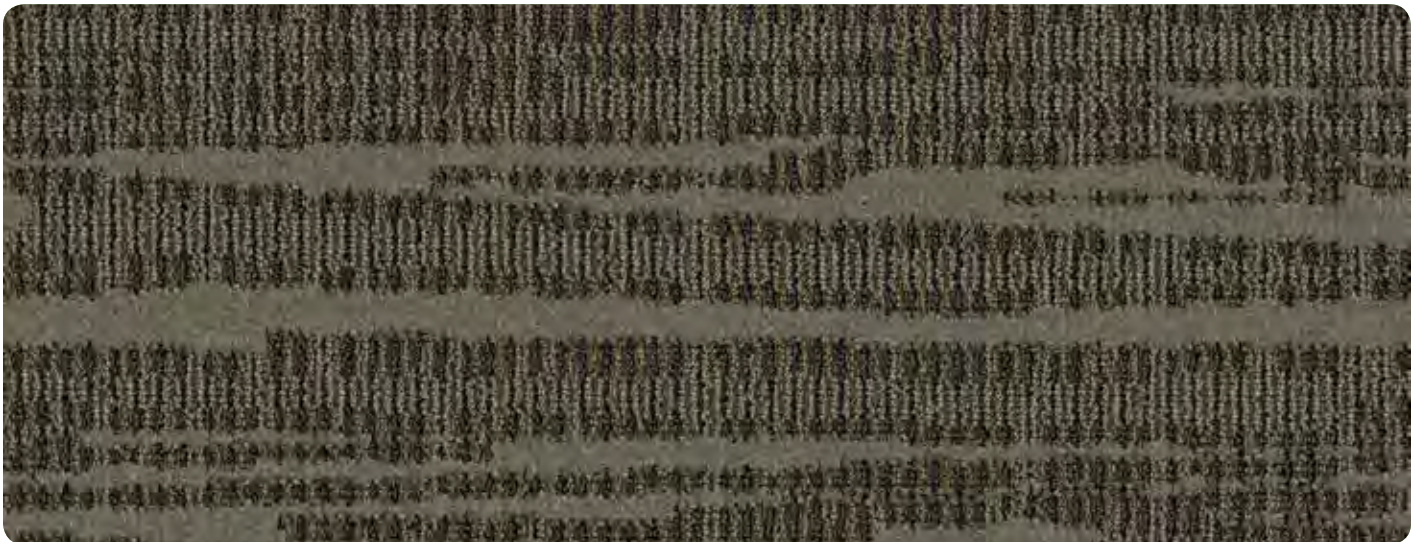
FLOORS FOR
SIGNATURE
SPACES





A) 3007 B) 3201 C) 3140

MOON GLASS



A) 3204 B) 3201 C) 3191

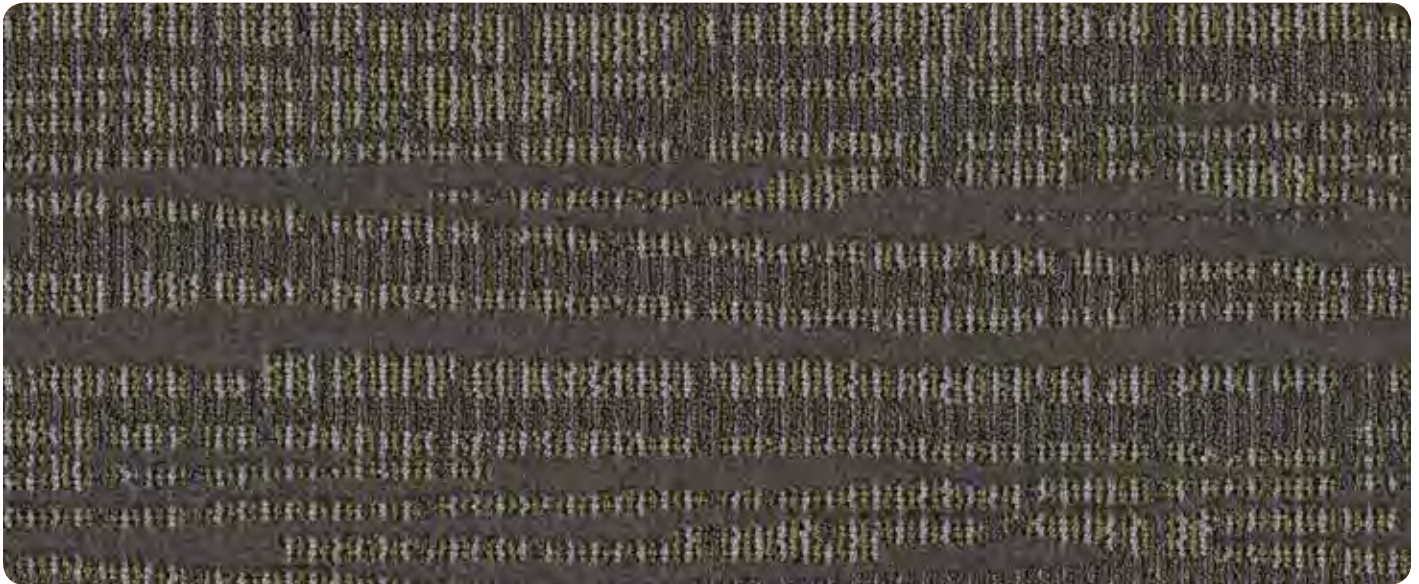
FOSSIL



A) 3231 B) 3238 C) 3236

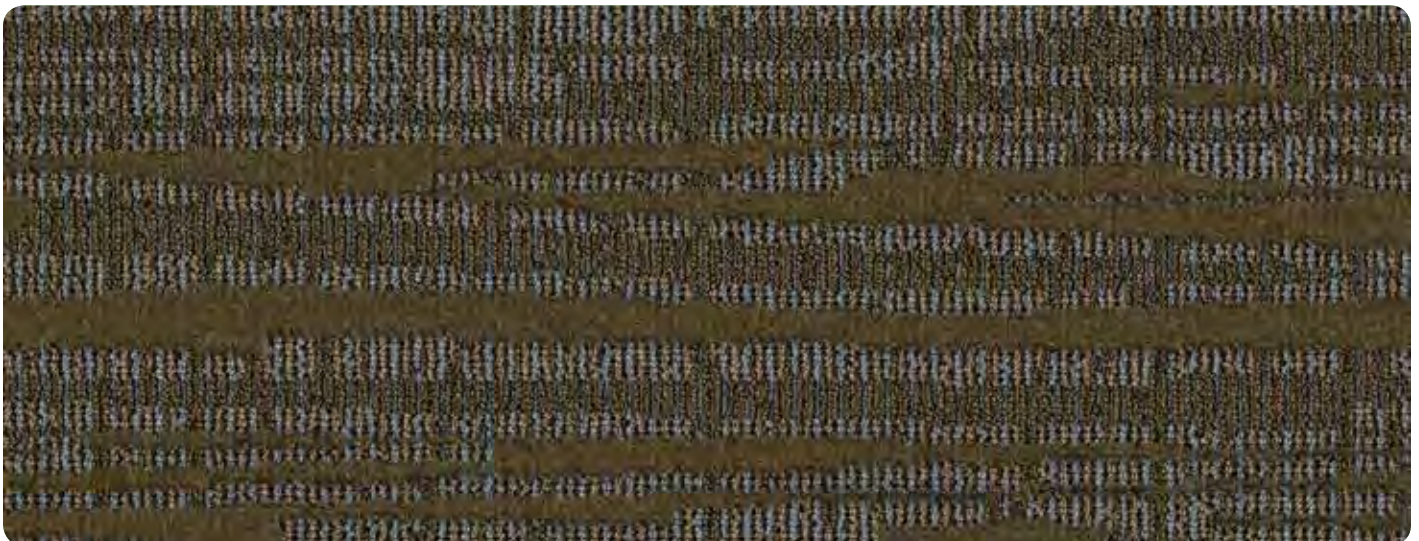
PLAYA





A) 3105 B) 3143 C) 3415

WET STONE



A) 3250 B) 3213 C) 3537

COBALT



A) 3140 B) 3193 C) 3141

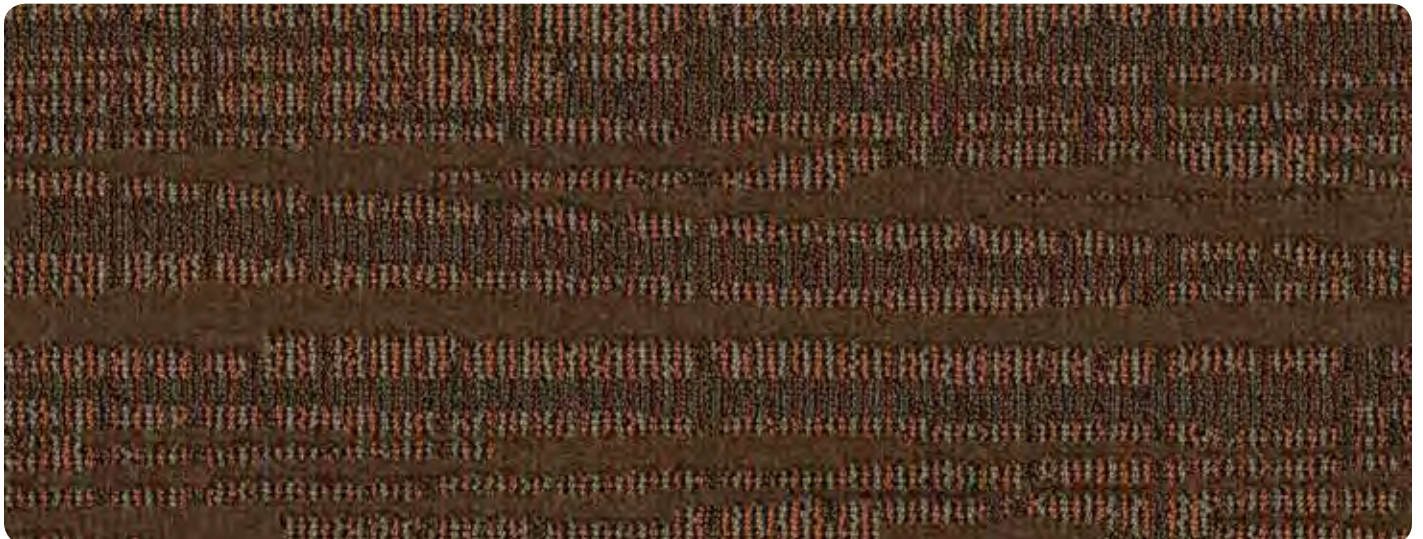
QUARTZ





A) 3207 B) 3210 C) 3216

DOLOMITE



A) 3210 B) 3207 C) 3216

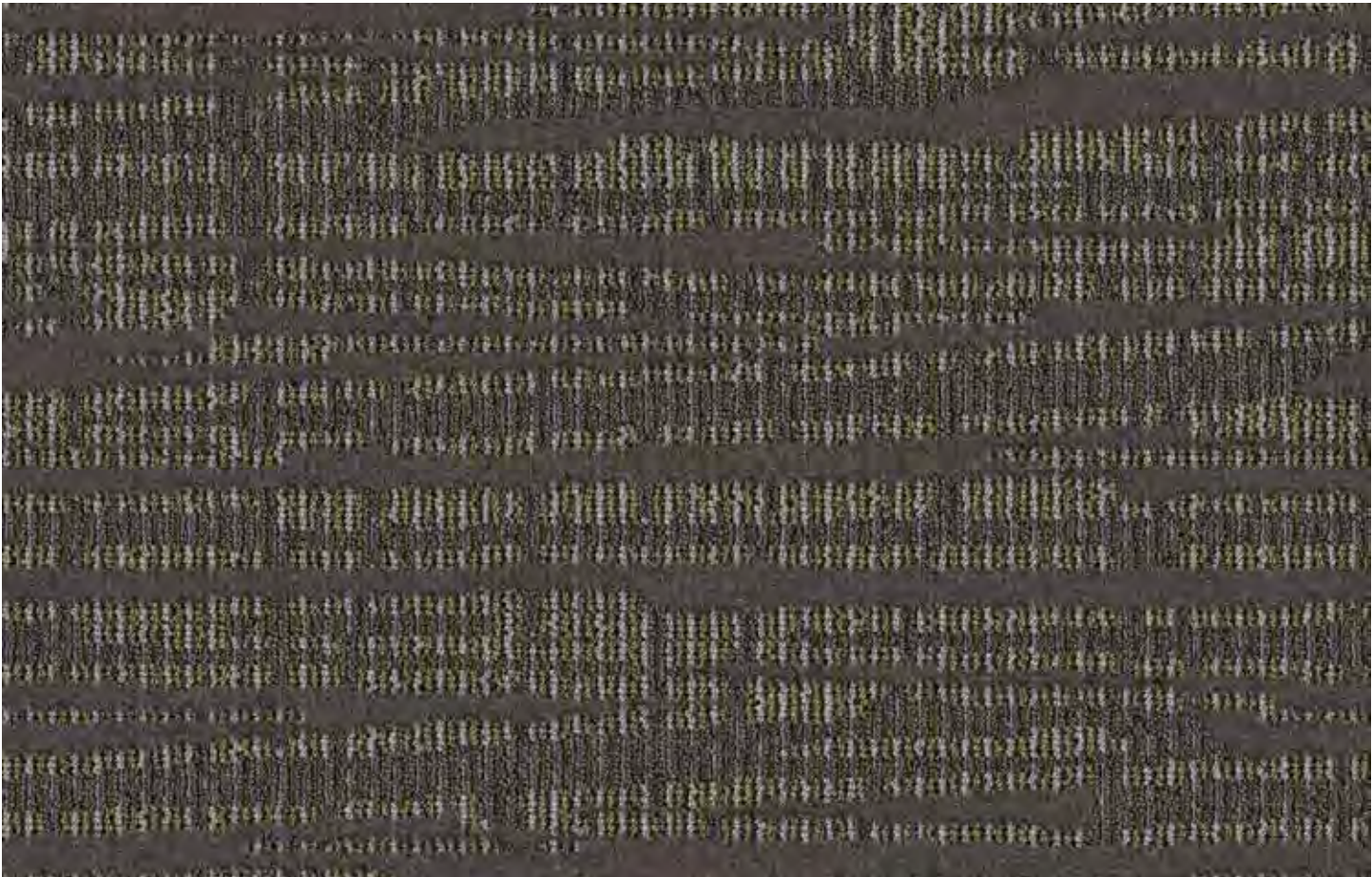
FLINT



A) 3234 B) 3212 C) 3750

MICA





A) 3105 B) 3143 C) 3415 WET STONE

MATCH STIX

CONSTRUCTION	1/10 INFINITY TIP SHEAR
PILE FIBER	100% SOLUTION DYED NYLON
STITCH RATE	14 SPI
PILE HEIGHT	.211
TUFTED PILE WEIGHT	32 oz
DYE METHOD	SOLUTION
PRIMARY BACKING	WOVEN POLYPROPYLENE
SECONDARY BACKING	ACTIONBAC
WIDTH	12' up to 15' available
DENSITY FACTOR	5,460
WEIGHT DENSITY FACTOR	174,711
WARRANTY	TEN YEAR LIMITED WEAR
SOIL & STAIN TREATMENT	SCOTCHGARD
PATTERN REPEAT	24" W x 36" L

TESTING DATA	
ASTM E-648 Flooring Radiant Panel:	Class I
DOC-FFI-70 Methenamine Pill Test:	Passes AATCC 134
Electrostatic Propensity:	Less than 3.5 KV
E-662 Smoke Chamber:	Less than 450

Available in 36 oz with 1000 syd minimum



FEATURED COLORWAY: MICA





STATIC

DASH

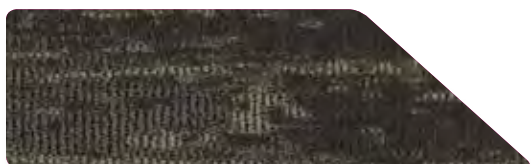


FORMAT

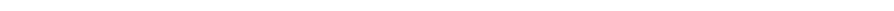


FLOORS FOR SIGNATURE SPACES

BROADLOOM & RUGS



MOTION



ATMOSPHERE



KINETIC



ZIP



ENERGY





STATIC BROADLOOM & RUG COLLECTION

CONSTRUCTION

PILE FIBER

GAUGE

STITCH RATE

PILE HEIGHT

TUFTED PILE WEIGHT

DYE METHOD

PRIMARY BACKING

SECONDARY BACKING

WIDTH IN FT.

DENSITY FACTOR

WEIGHT DENSITY FACTOR

WARRANTY

SOIL & STAIN TREATMENT

PATTERN REPEAT

HIGH PERFORMANCE TUFTED

100% SDN

1/10

13

.185

32

SOLUTION

WOVEN POLYPROPYLENE

ACTION BAC

12'

6,240

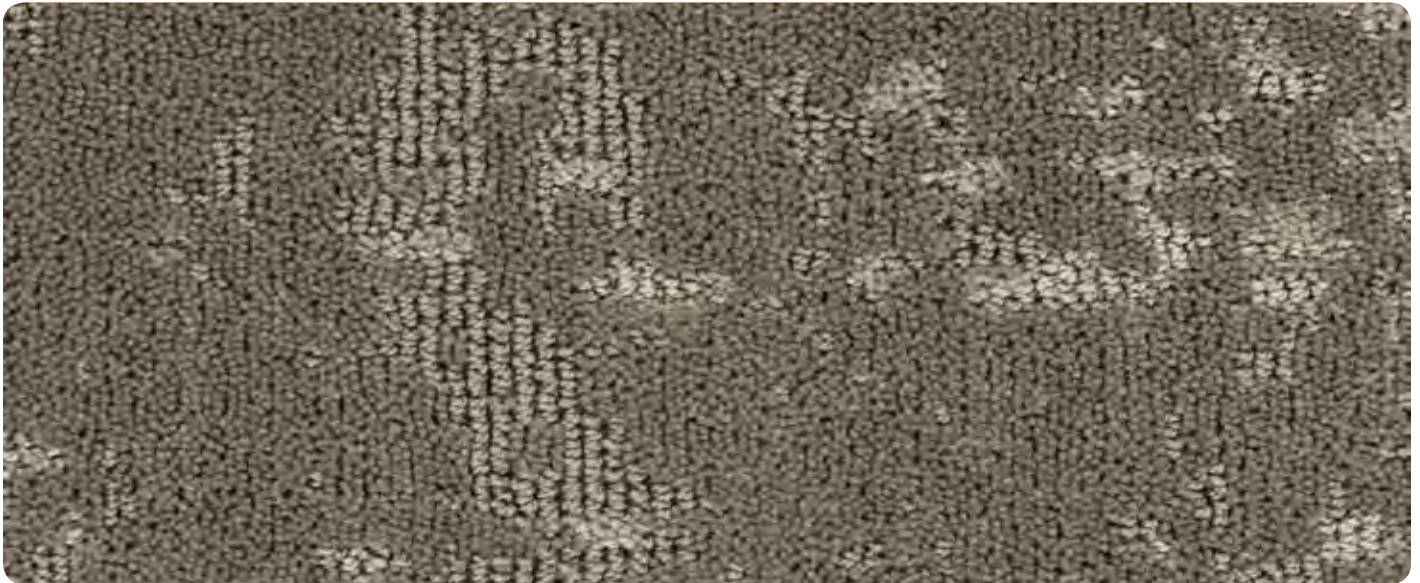
224,658

TEN YEAR LIMITED WEAR

SCOTCHGARD & STAIN RELEASE

72" x 97.2"





A) 3140 B) 3105

Dash



A) 3201 B) 3126

Format



A) 3412 B) 3238

Zip





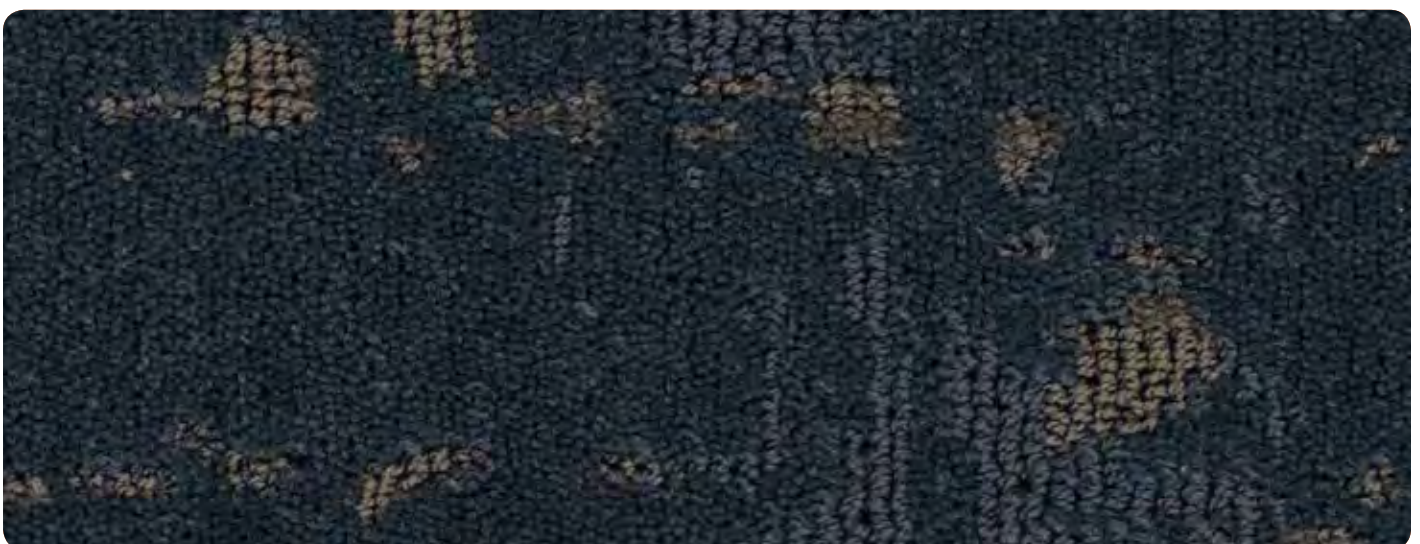
A) 3126 B) 3112

Motion



A) 3220 B) 3143

Energy



A) 3143 B) 3123

Atmosphere



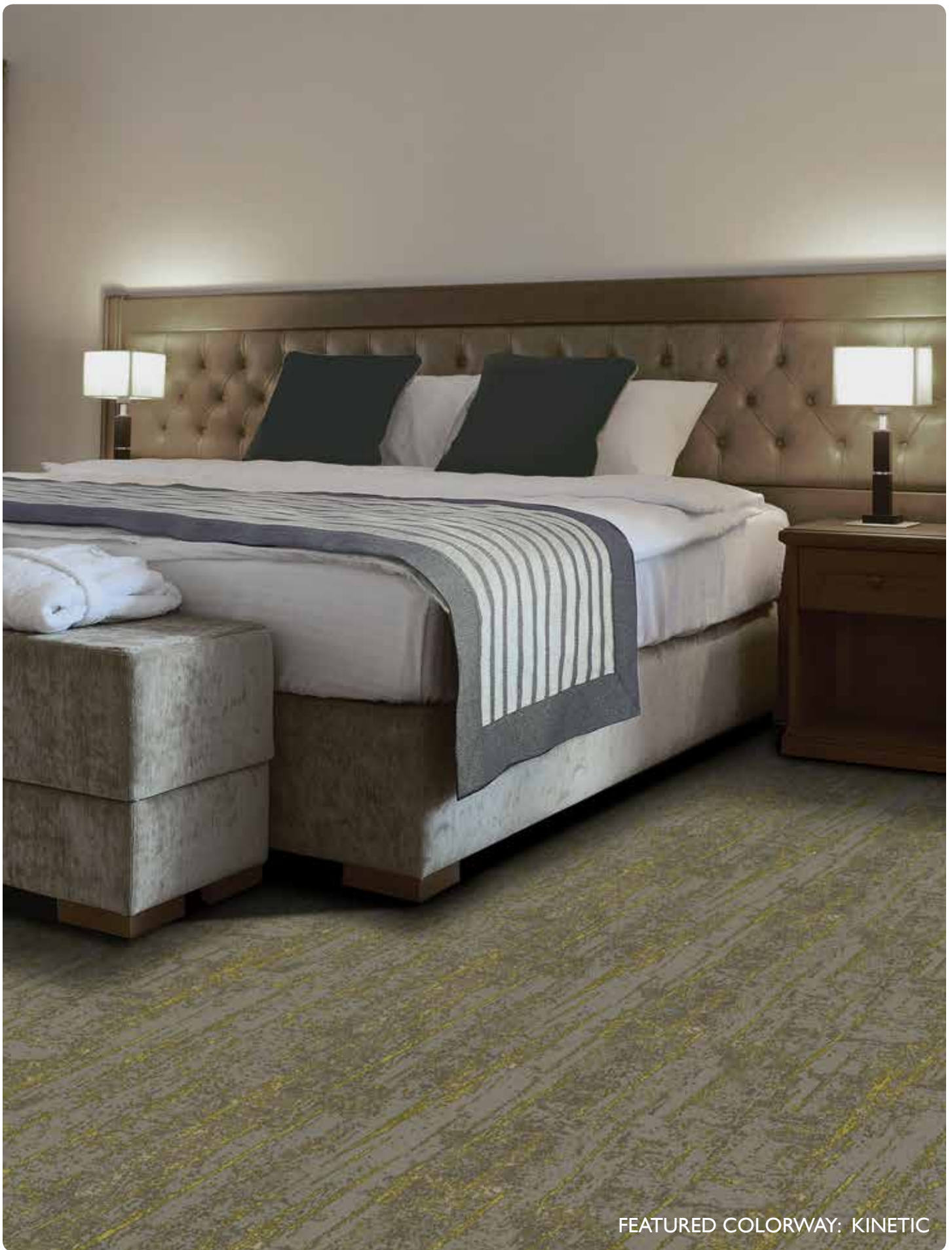


A) 408.700 B) 3126

Kinetic

STATIC

CONSTRUCTION	HIGH PERFORMANCE TUFTED
PILE FIBER	100% SDN
GAUGE	/10
STITCH RATE	13
PILE HEIGHT	.185
TUFTED PILE WEIGHT	32
DYE METHOD	SOLUTION
PRIMARY BACKING	WOVEN POLYPROPYLENE
SECONDARY BACKING	ACTION BAC
WIDTH IN FT.	12'
DENSITY FACTOR	6,240
WEIGHT DENSITY FACTOR	224,658
WARRANTY	TEN YEAR LIMITED WEAR
SOIL & STAIN TREATMENT	SCOTCHGARD & STAIN RELEASE
PATTERN REPEAT	72" x 97.2"
CERTIFICATION	CARPET & RUG INSTITUTE GLP 2121
TESTING DATA	
ASTM E-648 Flooring Radiant Panel:	Class I
DOC-FFI-70 Methenamine Pill Test:	Passes AATCC 134
Electrostatic Propensity:	Less than 3.5 KV
E-622 Smoke Chamber:	Less than 450



FEATURED COLORWAY: KINETIC



STATIC RUGS

BY

SIGNATURE

FEATURED COLOR: MOTION





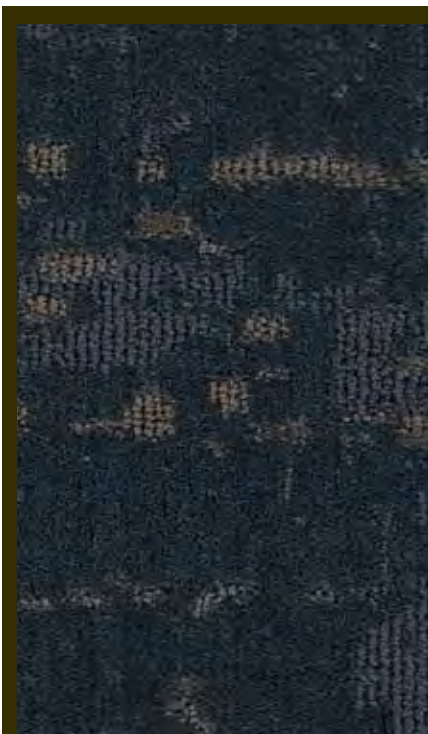
Dash



Format



Motion



Atmosphere

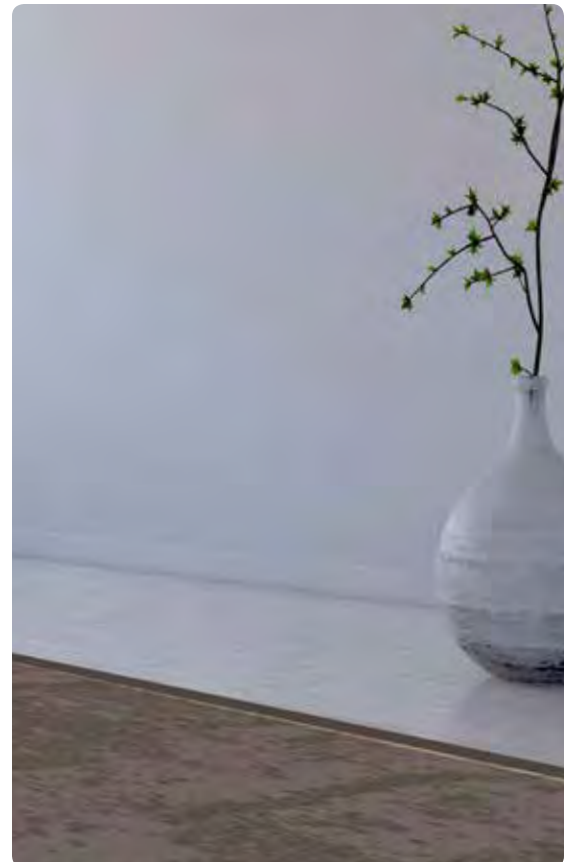


Zip



Energy





Kinetic

SIZES AVAILABLE

5' x 7'

8' x 10'

10' x 12'

12' x 15'

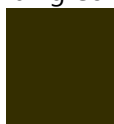
30" x 12' RUNNER

RUGS ARE BOUND WITH A 3" FAUX LEATHER MATERIAL, MITERED CORNERS. AVAILABLE IN 5 SIZES.

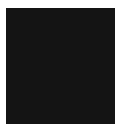
Binding Color



Brandy



Forest



Nero





FEATURED COLORWAY: KINETIC





THREADS III

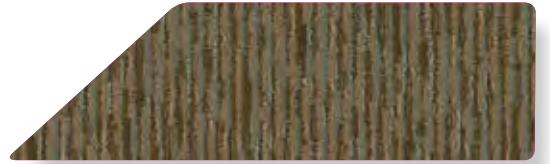
BEST BET



BIG IMPACT



DARK SECRET



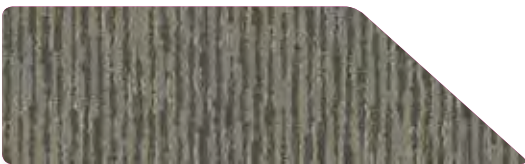
MEDIA PLAY



NEW VIEW



SEQUEL



STAR STRUCK



TELL TALE



TRENDS

FLOORS FOR
SIGNATURE
SPACES





A) 3105 B) 3204 C) 002.246

BEST BET



A) 3511 B) 3236 C) 3250

BIG IMPACT



A) 3231 B) 3215 C) 3223

DARK SECRET





A) 3464 B) 3236 C) 3112

MEDIA PLAY



A) 3464 B) 3236 C) 3420

NEW VIEW



A) 193.140 B) 3105 C) 3197

SEQUEL





A) 3105 B) 3193 C) 002.246

STAR STRUCK



A) 3250 B) 3105 C) 3112

TELL TALE



A) 3126 B) 188.140 C) 3213

TRENDS





A) 3231 B) 3215 C) 3223

DARK SECRET

THREADS III

CONSTRUCTION	1/8 LOOP SCROLL TIP SHEAR
PILE FIBER	100% SOLUTION DYED NYLON
STITCH RATE	15 SPI
PILE HEIGHT/ TOTAL THICKNESS	.198 / APPROX. 11/32nds
TUFTED PILE WEIGHT	32 oz
DYE METHOD	SOLUTION
PRIMARY BACKING	WOVEN POLYPROPYLENE
SECONDARY BACKING	ACTIONBAC
WIDTH	12'
DENSITY FACTOR	5,818
WEIGHT DENSITY FACTOR	186,182
WARRANTY	TEN YEAR LIMITED WEAR
SOIL & STAIN TREATMENT	SCOTCHGARD
PATTERN REPEAT	W 15" X L 10"

TESTING DATA	
ASTM E-648 Flooring Radiant Panel:	Class I
DOC-FFI-70 Methenamine Pill Test:	Passes AATCC 134
Electrostatic Propensity:	Less than 3.5 KV
E-662 Smoke Chamber:	Less than 450

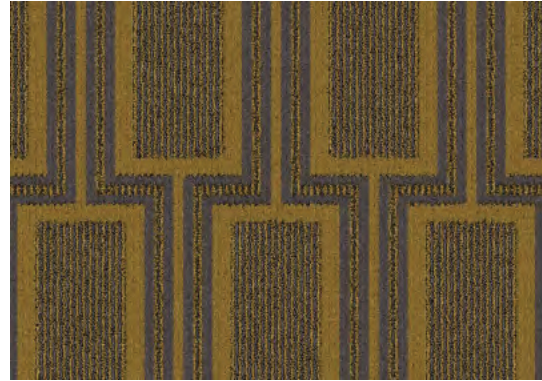


FEATURED COLORWAY: DARK SECRET



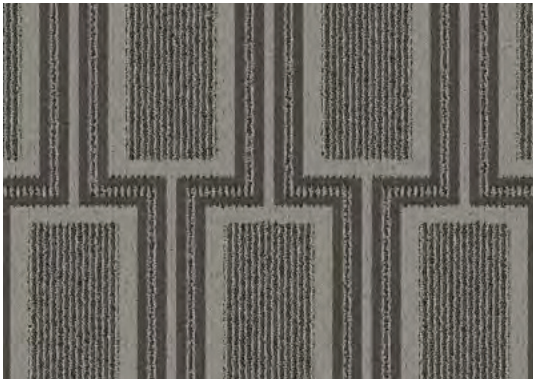


Portfolio Room Scene



Baroque

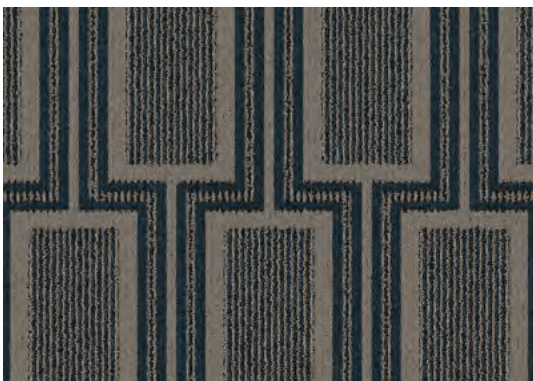
Portfolio



Bauhaus



Eclectic



Federal



Jacobean

Portfolio

CARPET SPECIFICATIONS

CONSTRUCTION	1/8 LOOP SCROLL TIP SHEAR
PILE FIBER	100% SOLUTION DYED NYLON
STITCH RATE	15 SPI
PILE HEIGHT	.197
TUFTED PILE WEIGHT	32 oz
DYE METHOD	SOLUTION
PRIMARY BACKING	WOVEN POLYPROPYLENE
SECONDARY BACKING	ACTIONBAC
WIDTH	12'
DENSITY FACTOR	5,847
WEIGHT DENSITY FACTOR	187,104
WARRANTY	TEN YEAR LIMITED WEAR
SOIL & STAIN TREATMENT	SCOTCHGARD
PATTERN REPEAT	W 7.5" X L 32"
CERTIFICATION	CARPET & RUG INSTITUTE GLP5076
TESTING DATA	ASTM E-648 Flooring Radiant Panel: Class I DOC-FF1-70 Methenamine Pill Test: Passes AATCC 134 Electrostatic Propensity: Less than 3.5 KV E0622 Smoke Chamber: Less than 450

Specifications are based on averages from manufacturing processes and may vary within normal industry tolerances. Material supply and /or manufacturing processes may necessitate specification changes without notice. Such variations do not affect product performance.

This carpet is manufactured and recommended for floor covering use only. As in all quality carpet, colors are subject to dye lot variations. For optimum side match and finished seam appearance, this product should be installed whenever possible, with seams running perpendicular to major eternal (outside) light sources.

The equipment used to manufacture patterned (graphics) carpet may create visible lines in both length and width directions. This characteristic will not always be detectable in small samples and is not considered a manufacturing defect.

As with all patterned carpets, perfect pattern match may not be obtainable at seams. Tolerances in pattern registration – bow and skew – are to be

expected. Reasonable pattern matches may be obtained by using trained, experienced professional installers and by following the manufacturers' installation procedures.

Chair pads are recommended under office chairs with rollers to preserve appearance retention, avoid premature or accelerated wear, and act as a deterrent toward delamination. Special backing systems are available that do not require chair pads.

Walk off mats are recommended at building entry ways to reduce soiling. Recommended adhesive is Signature Hospitality 2800 Multi Purpose Latex Adhesive and Signature Hospitality 1801 Universal Seam Sealer. For warranties to apply, all adhesives and seam sealers must be approved by Signature Hospitality Carpet.

For samples, specifications, or other information please contact your sales Representative.



SIGNATURE

Public areas carpet

ALIGN

ALIGN

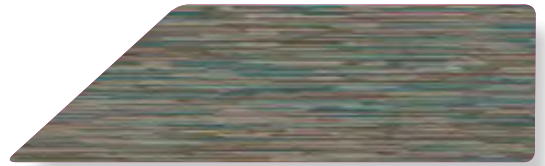


FRINGE

LEVEL

ORIENT

POLISH



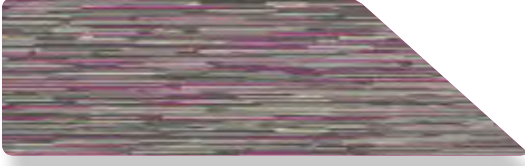
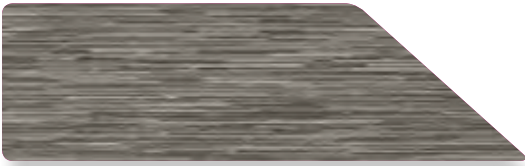
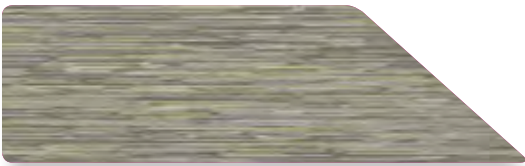
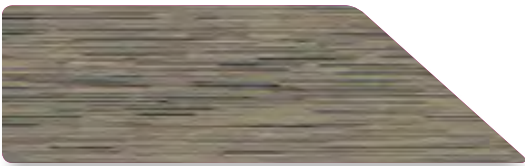
SHADE

STREAMLINE

TAILOR

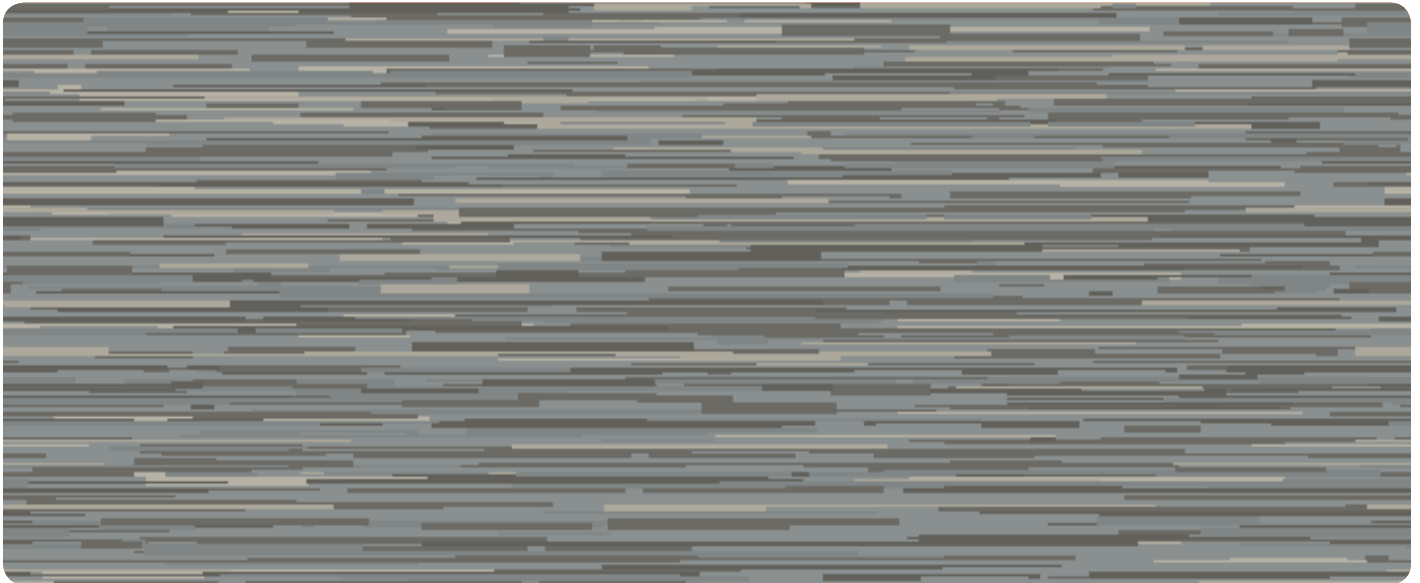
TRACE

NEAT



FLOORS FOR
SIGNATURE
SPACES





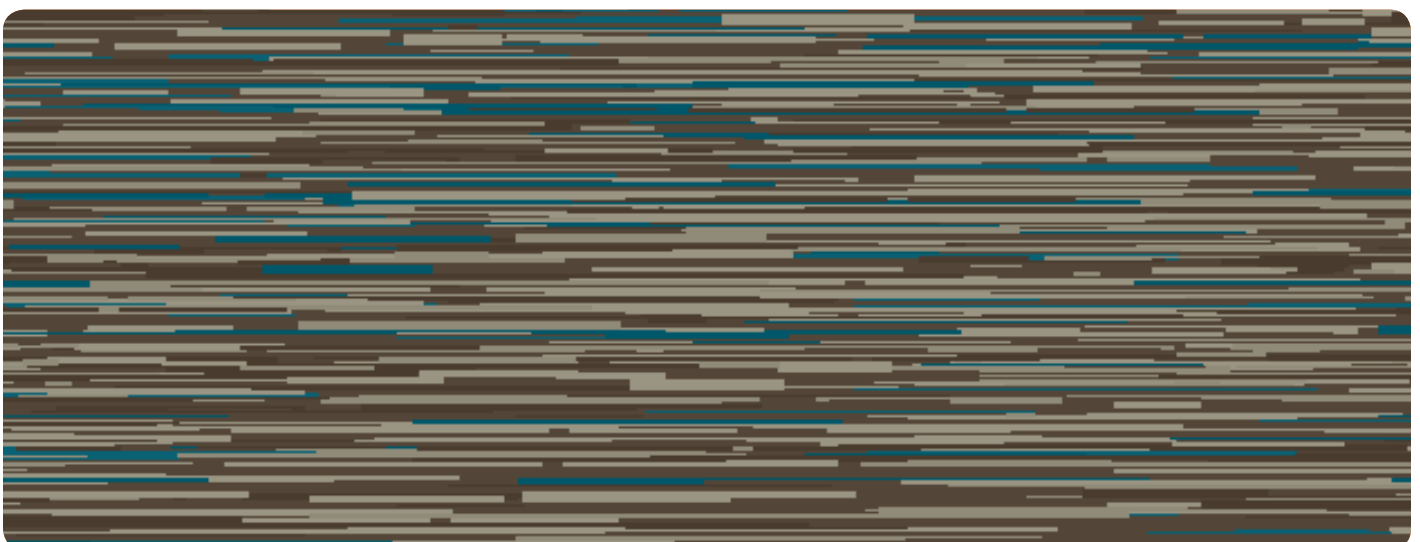
A) 193.140 B) 3197 C) 3105

FRINGE



A) 3120 B) 3201 C) 3105

LEVEL



A) 3238 B) 188.140 C) 3453

ORIENT





A) 3204 B) 3201 C) 3219

POLISH



A) 3126 B) 3236 C) 3123

SHADE



A) 3143 B) 3105 C) 3404

STREAMLINE





A) 3120 B) 3201 C) 3363

TAILOR



A) 3126 B) 3103 C) 188.140

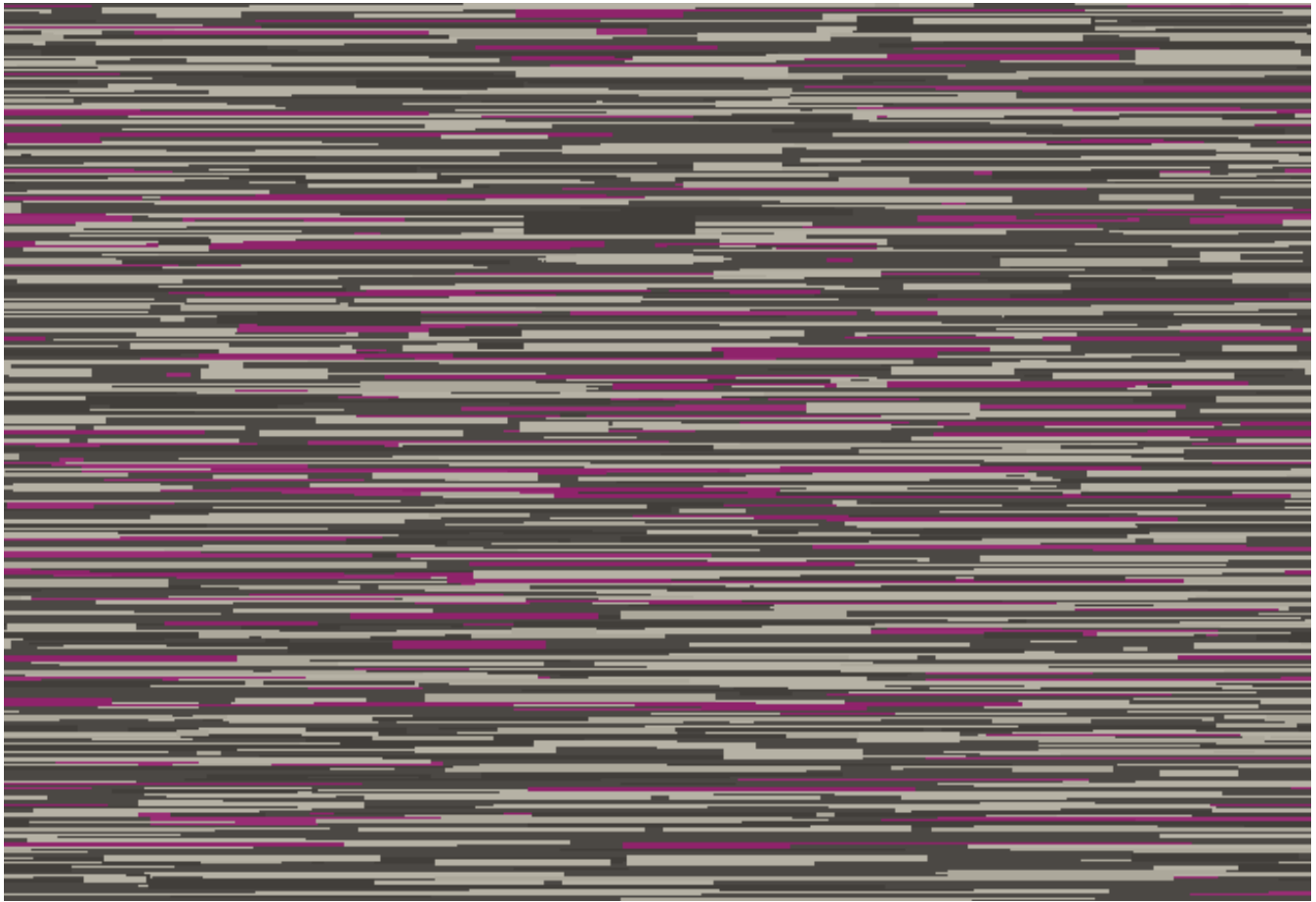
TRACE



A) 3120 B) 3105 C) 3355

NEAT





A) 3120 B) 3105 C) 3355

NEAT

ALIGN

CONSTRUCTION

PILE FIBER

STITCH RATE

PILE HEIGHT

TUFTED PILE WEIGHT

DYE METHOD

PRIMARY BACKING

SECONDARY BACKING

WIDTH

DENSITY FACTOR

WEIGHT DENSITY FACTOR

WARRANTY

SOIL & STAIN TREATMENT

PATTERN REPEAT

1/10TH COLORPOINT INFINITY

100% SOLUTION DYED NYLON

12 SPI

.218

40 oz

SOLUTION

WOVEN POLYPROPYLENE

Contract Print Base

12'

6,605

264,200

TEN YEAR LIMITED WEAR

SCOTCHGARD AVAILABLE

72" x 36"

TESTING DATA

ASTM E-648 Flooring Radiant Panel:

DOC-FFI-70 Methenamine Pill Test:

Electrostatic Propensity:

E-662 Smoke Chamber:

Class I

Passes AATCC 134

Less than 3.5 KV

Less than 450



FEATURED COLORWAY: NEAT



CROSSLINE

BRIDGING

CHART

FOCAL POINT

OPTICAL TIES

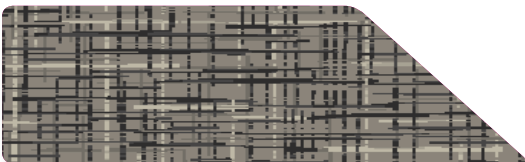
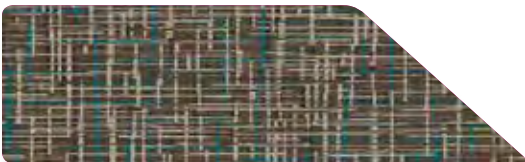
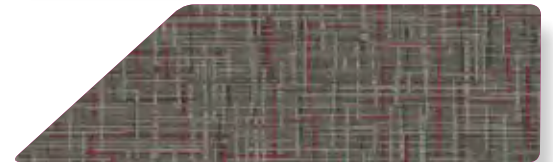
OVERLAY

SEAMING

SIGHTING

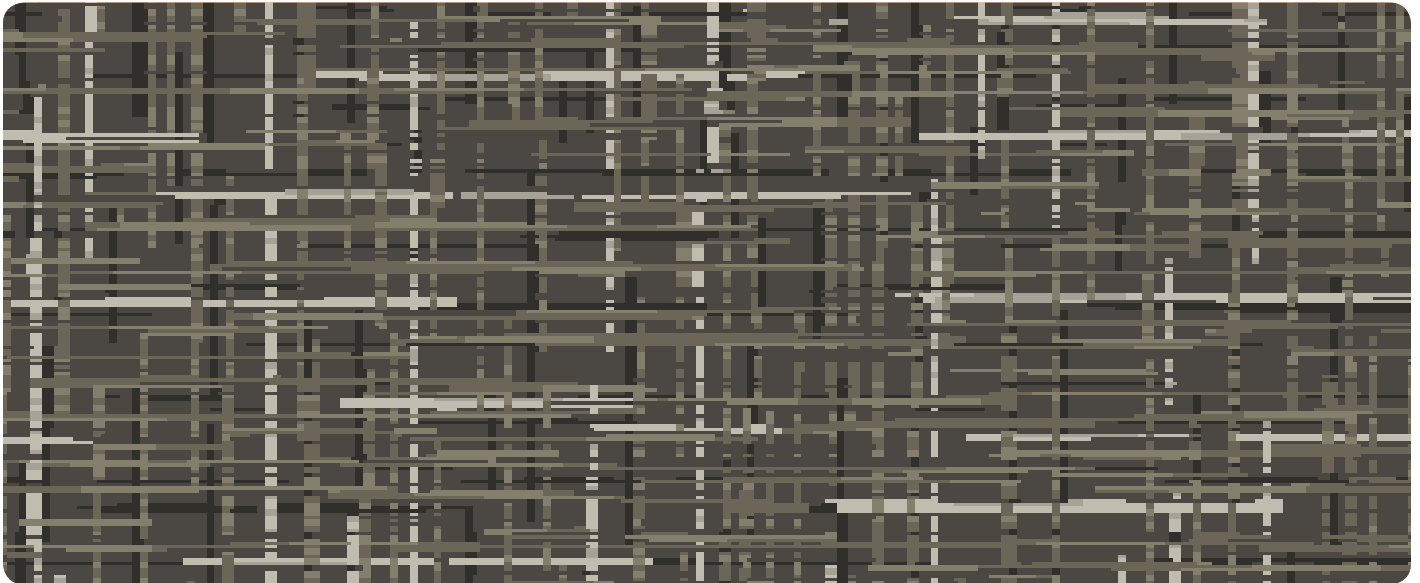
SILK SCREEN

WIRED



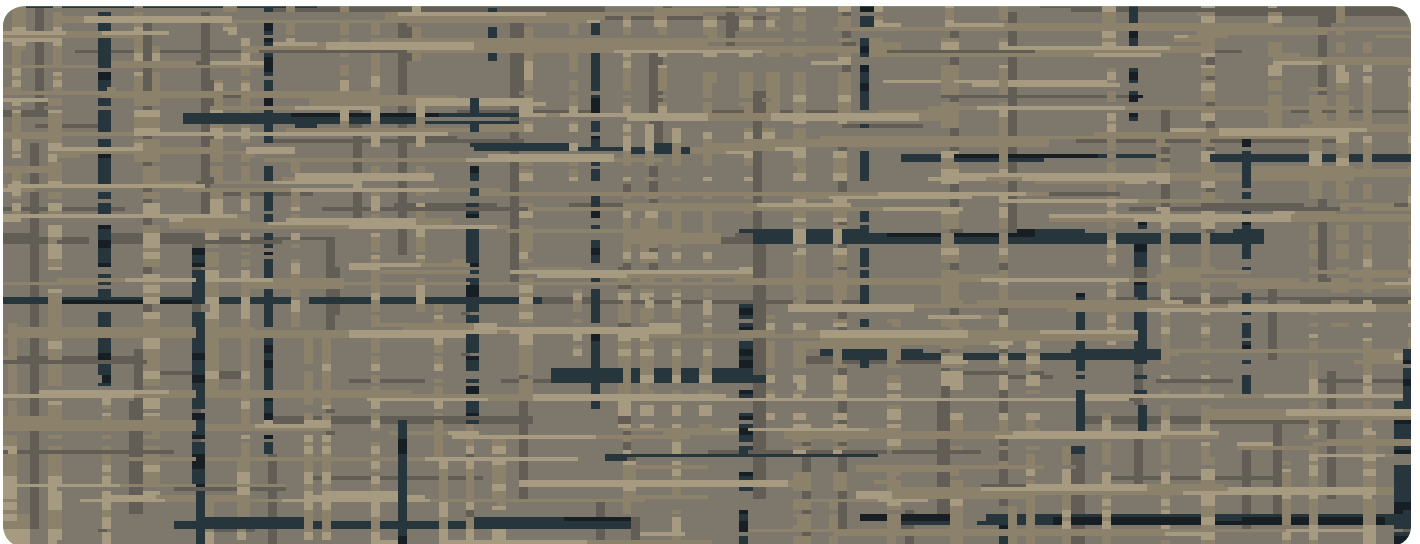
FLOORS FOR
SIGNATURE
SPACES





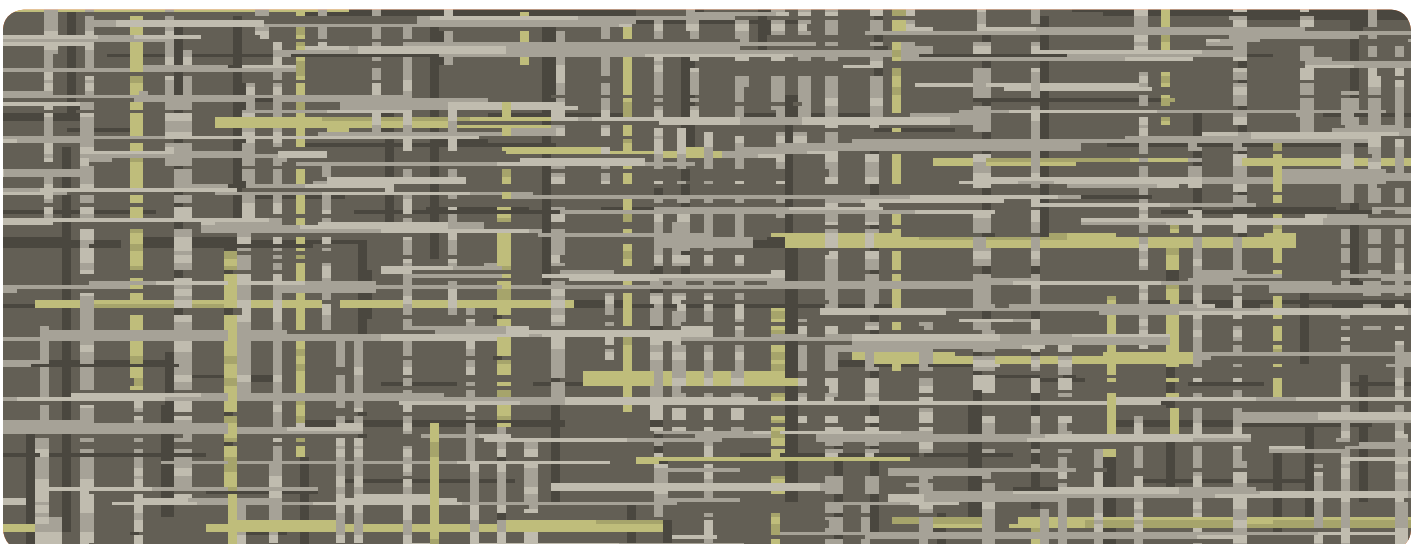
A) 3120 B) 3201 C) 3105

BRIDGING



A) 3126 B) 3236 C) 3123

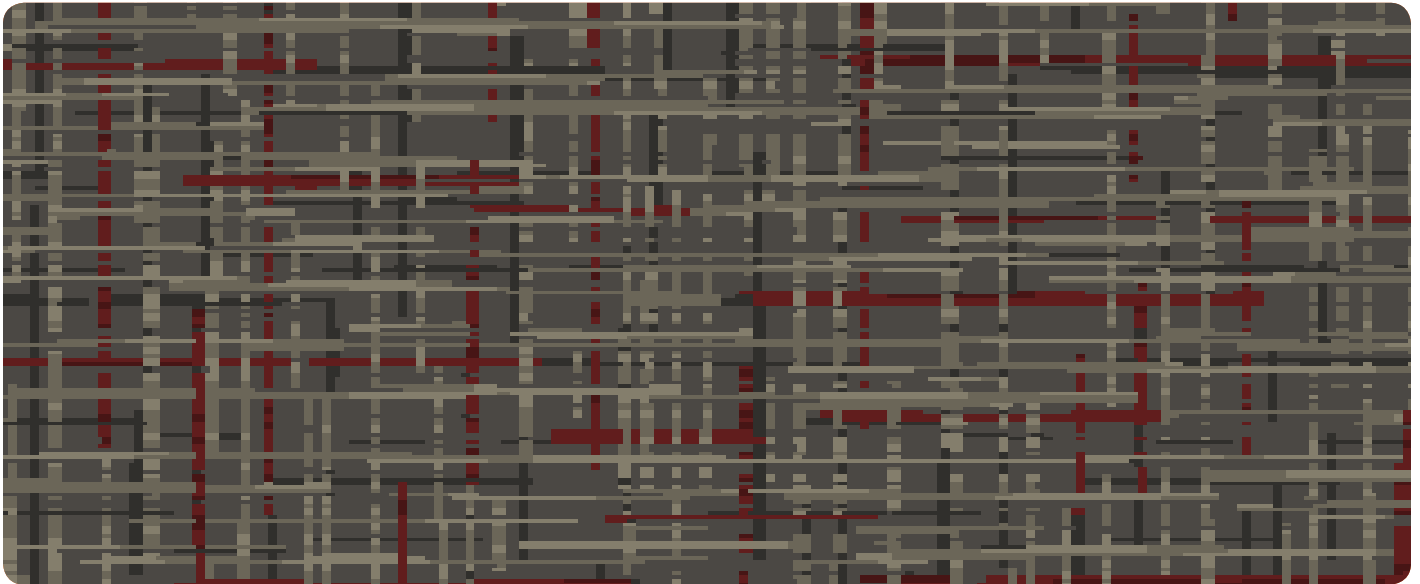
CHART SITE



A) 3143 B) 3105 C) 3404

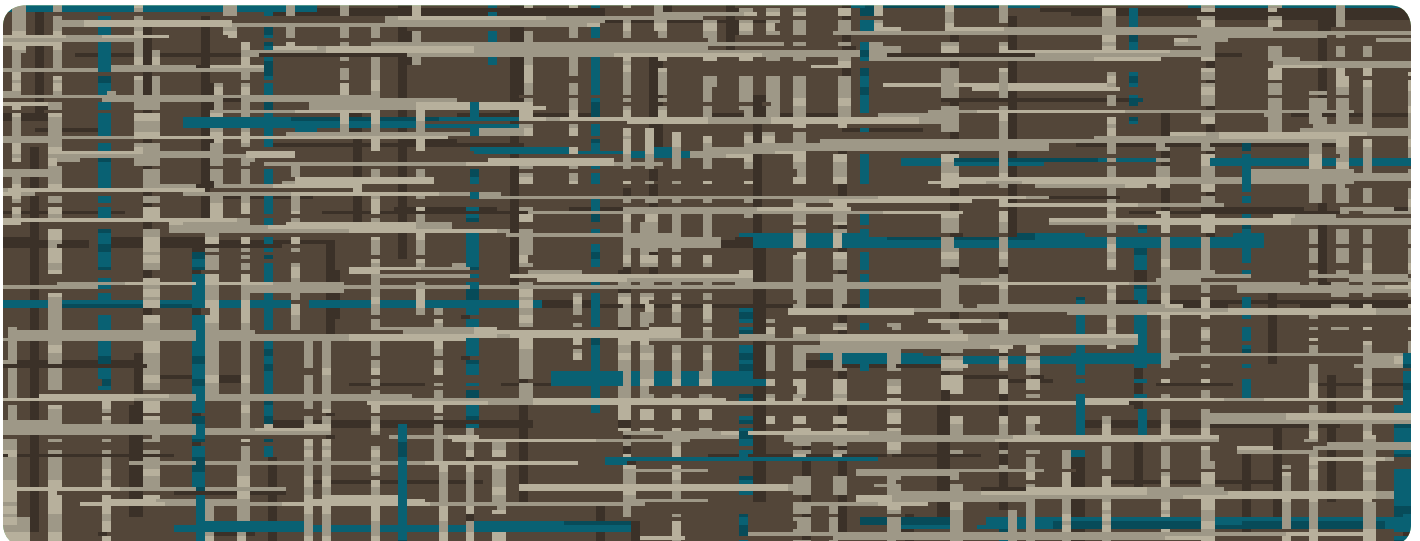
FOCAL PLANE





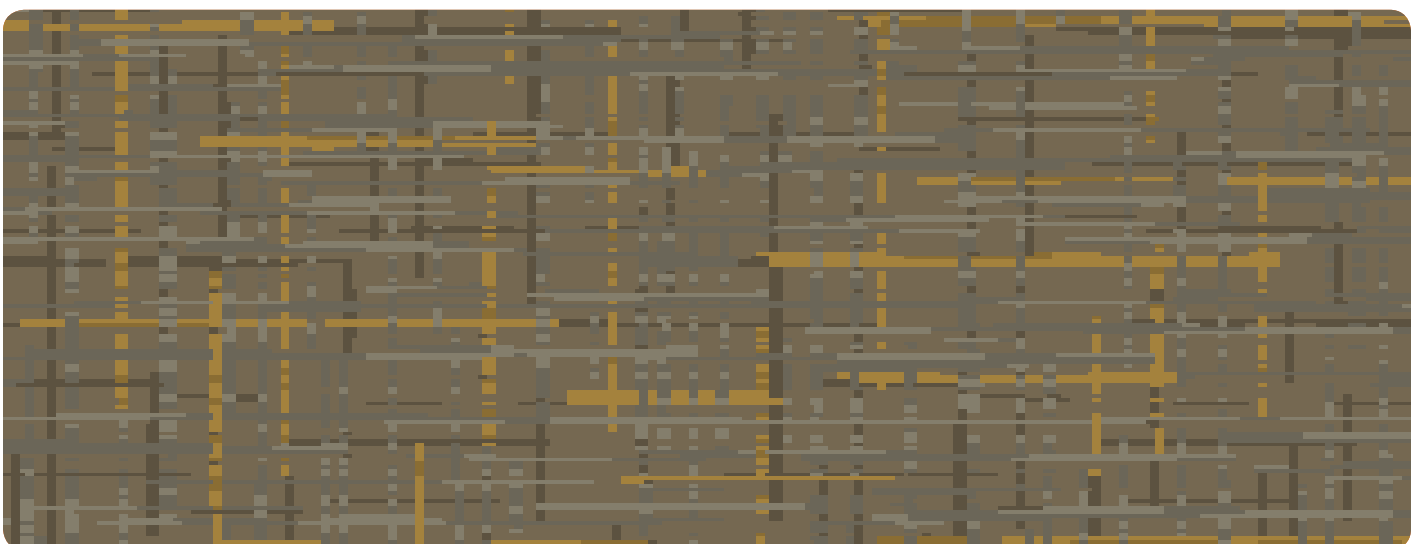
A) 3120 B) 3201 C) 3363

OPTICAL TIES



A) 3238 B) 188.140 C) 3453

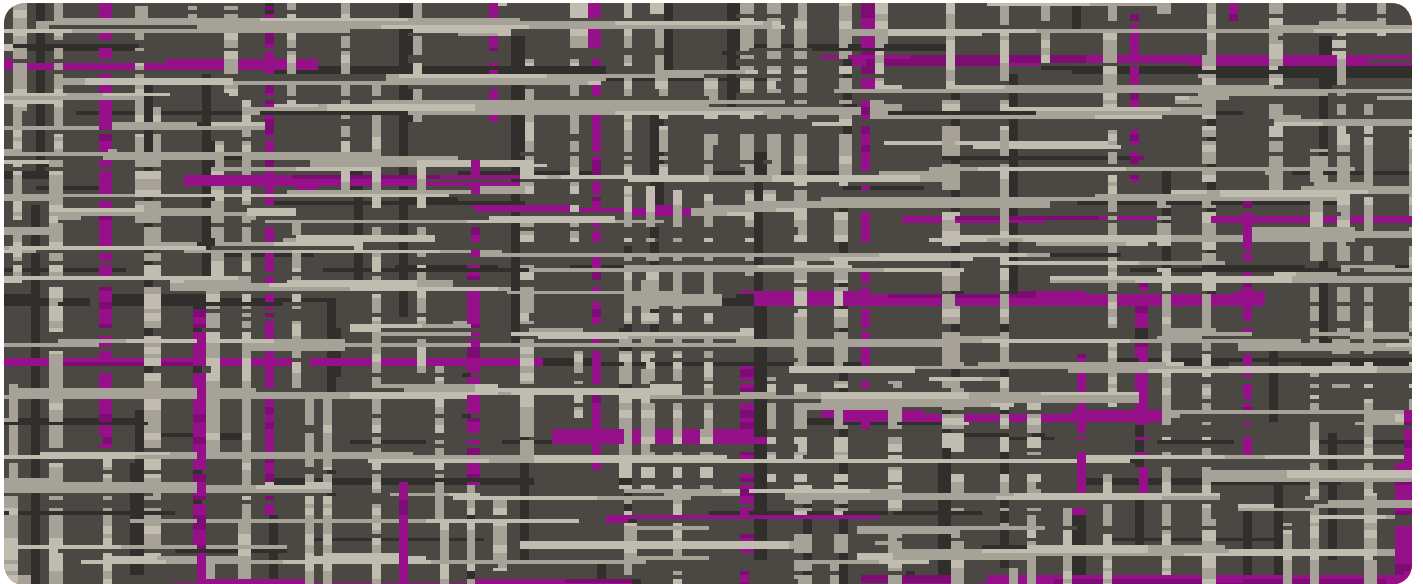
OVERLAY



A) 3204 B) 3201 C) 3219

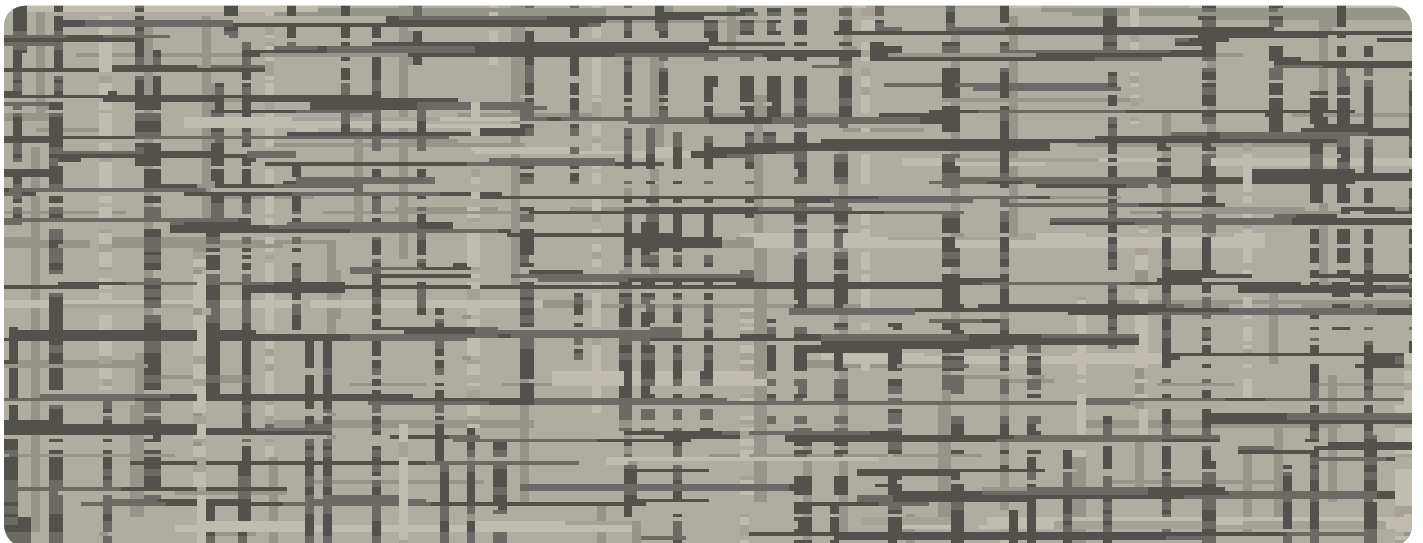
SEAMING





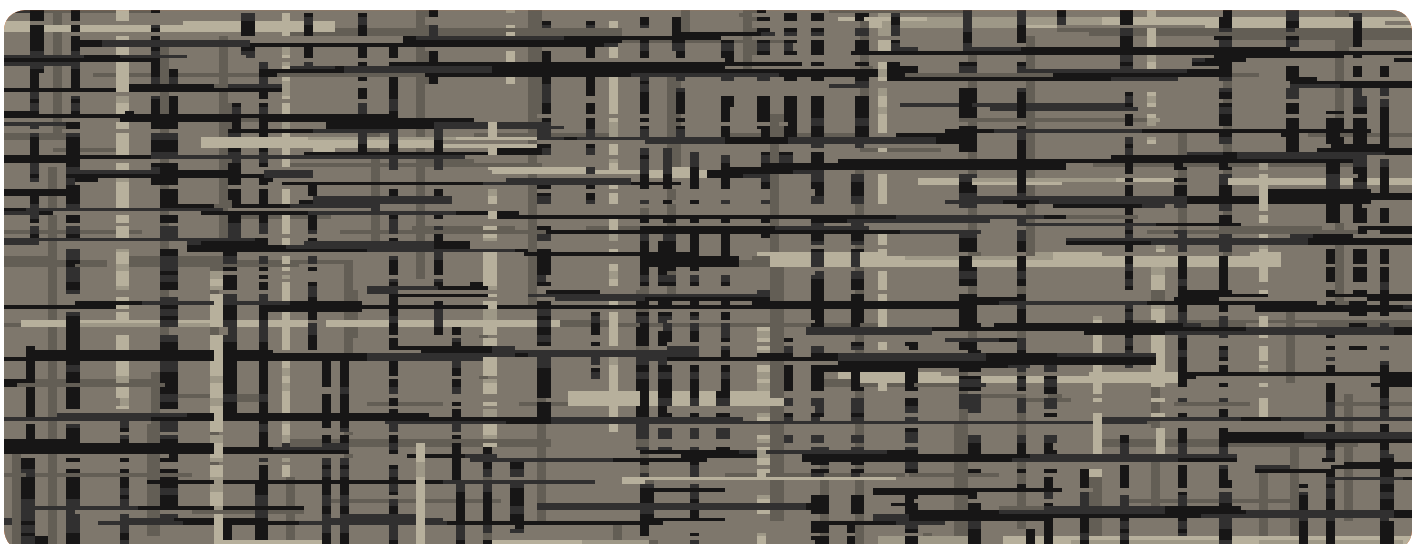
A) 3120 B) 3105 C) 3355

SIGHTING



A) 193.140 B) 3197 C) 3105

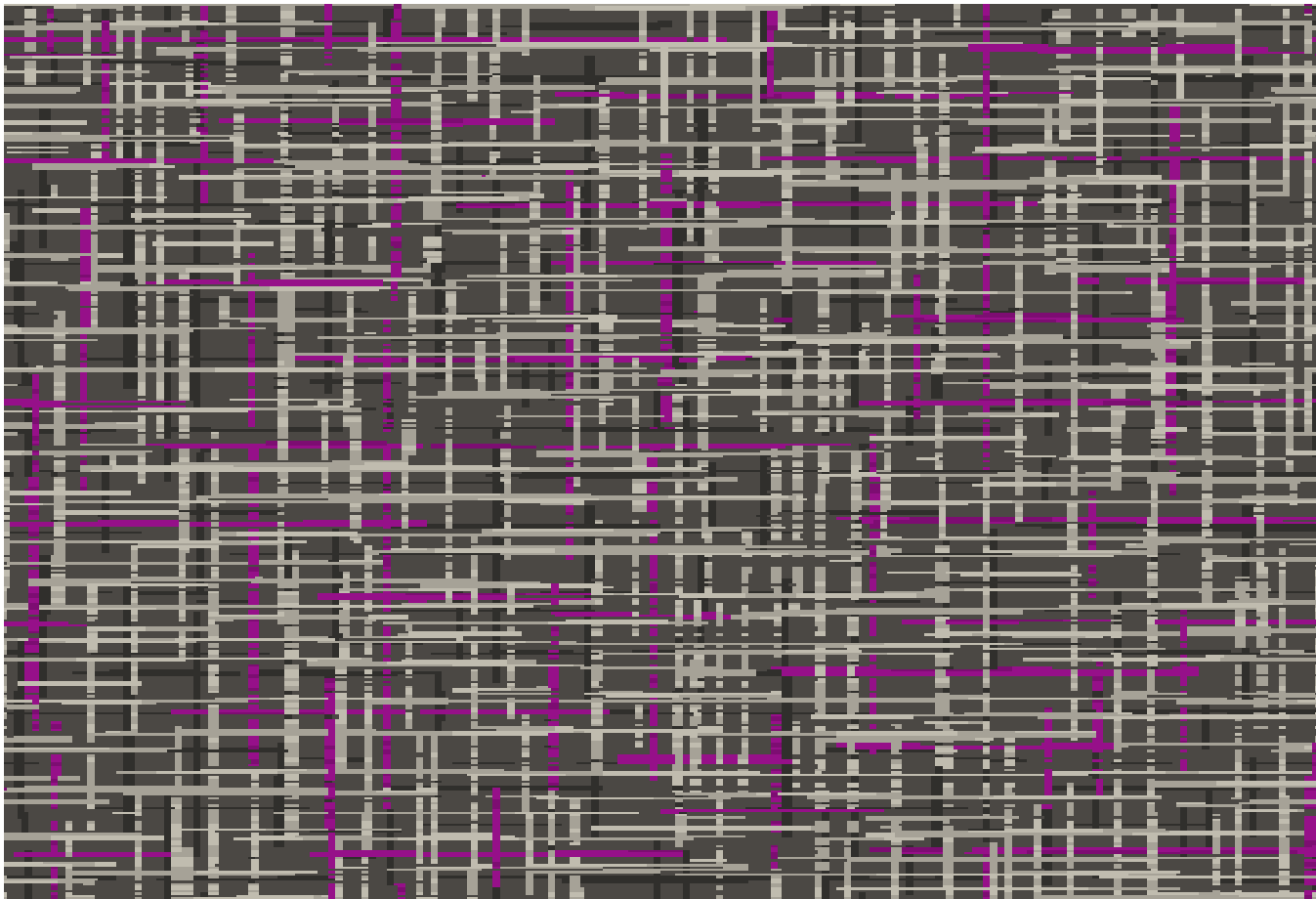
SILK SCREEN



A) 3126 B) 3103 C) 188.140

WIRED





A) 3120 B) 3105 C) 3355

SIGHTING

CROSSLINE

CONSTRUCTION

PILE FIBER

STITCH RATE

PILE HEIGHT

TUFTED PILE WEIGHT

DYE METHOD

PRIMARY BACKING

SECONDARY BACKING

WIDTH

DENSITY FACTOR

WEIGHT DENSITY FACTOR

WARRANTY

SOIL & STAIN TREATMENT

PATTERN REPEAT

1/10TH COLORPOINT INFINITY

100% SOLUTION DYED NYLON

12 SPI

.218

40 oz

SOLUTION

WOVEN POLYPROPYLENE

Contract Print Base

12'

6,605

264,200

TEN YEAR LIMITED WEAR

SCOTCHGARD AVAILABLE

36" x 31.5"

TESTING DATA

ASTM E-648 Flooring Radiant Panel:

DOC-FFI-70 Methenamine Pill Test:

Electrostatic Propensity:

E-662 Smoke Chamber:

Class I

Passes AATCC 134

Less than 3.5 KV

Less than 450



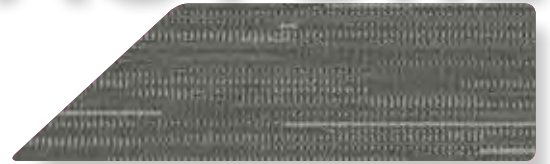
FEATURED COLORWAY: SIGHTING





FRACTURE

TALC



FOSSIL



CINDER



MALACHITE



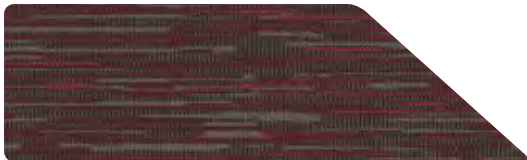
CLIFF



FLINT



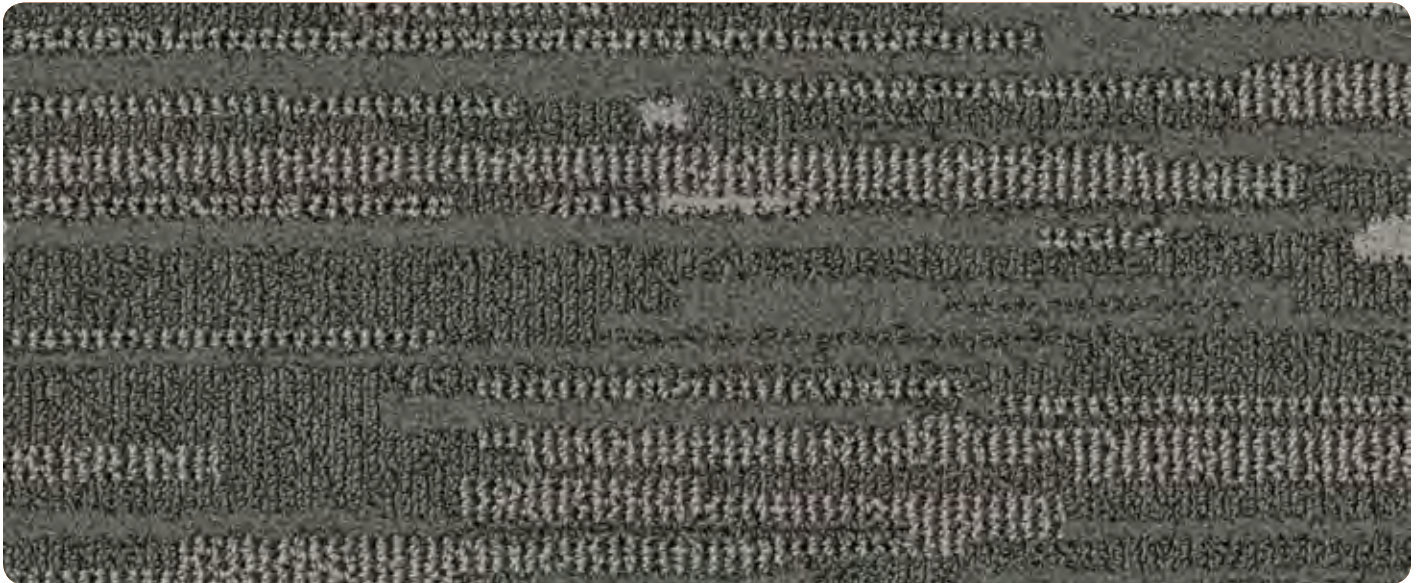
SAPPHIRE



GARNET

FLOORS FOR
SIGNATURE
SPACES





A) 002.246 B) 3188

TALC



A) 3126 B) 3140

FOSSIL



A) 3250 B) 3299

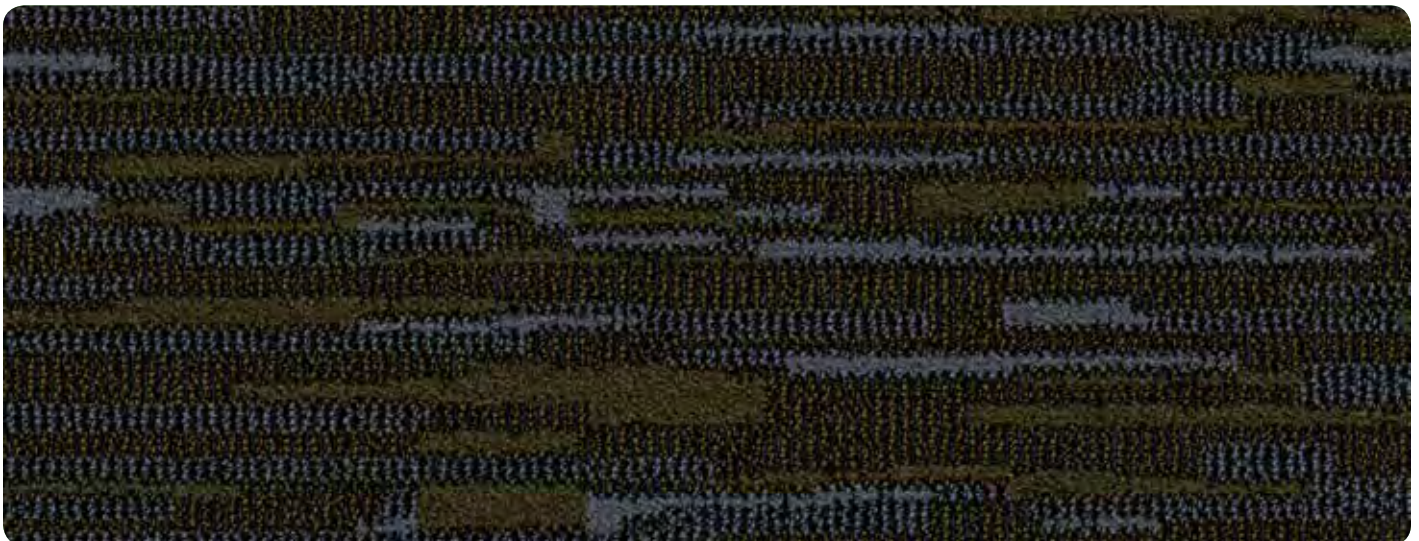
CINDER





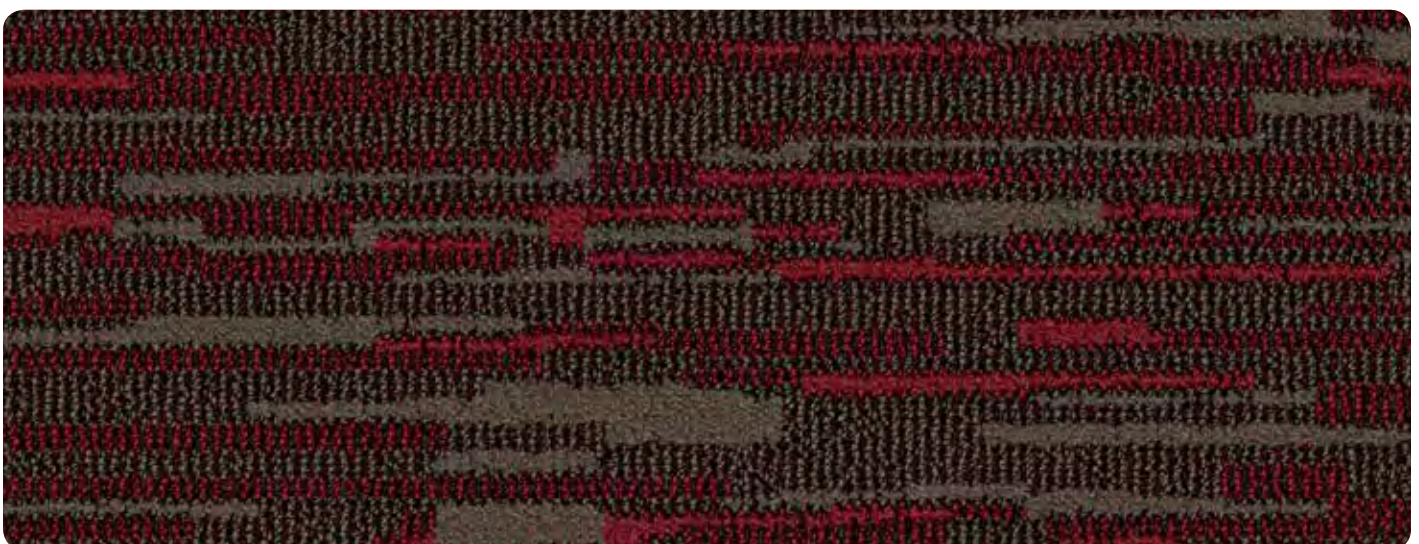
A) 3197 B) 3105

CLIFF



A) 3299 B) 3511

SAPPHIRE



A) 3120 B) 3363

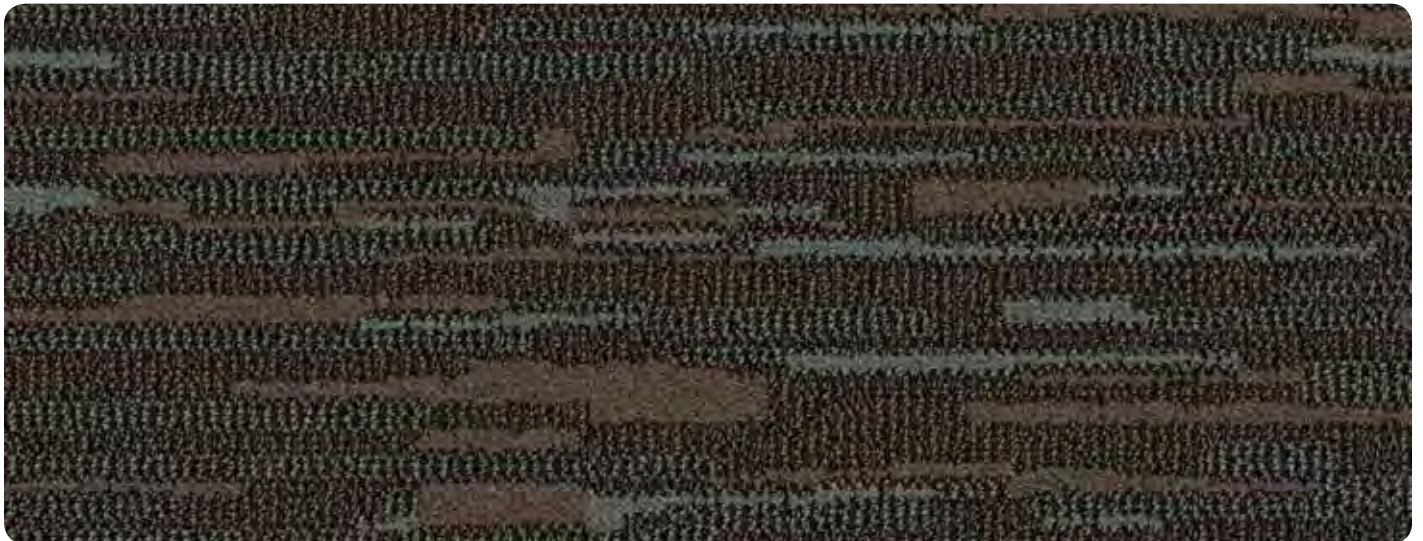
GARNET





A) 3112 B) 3108

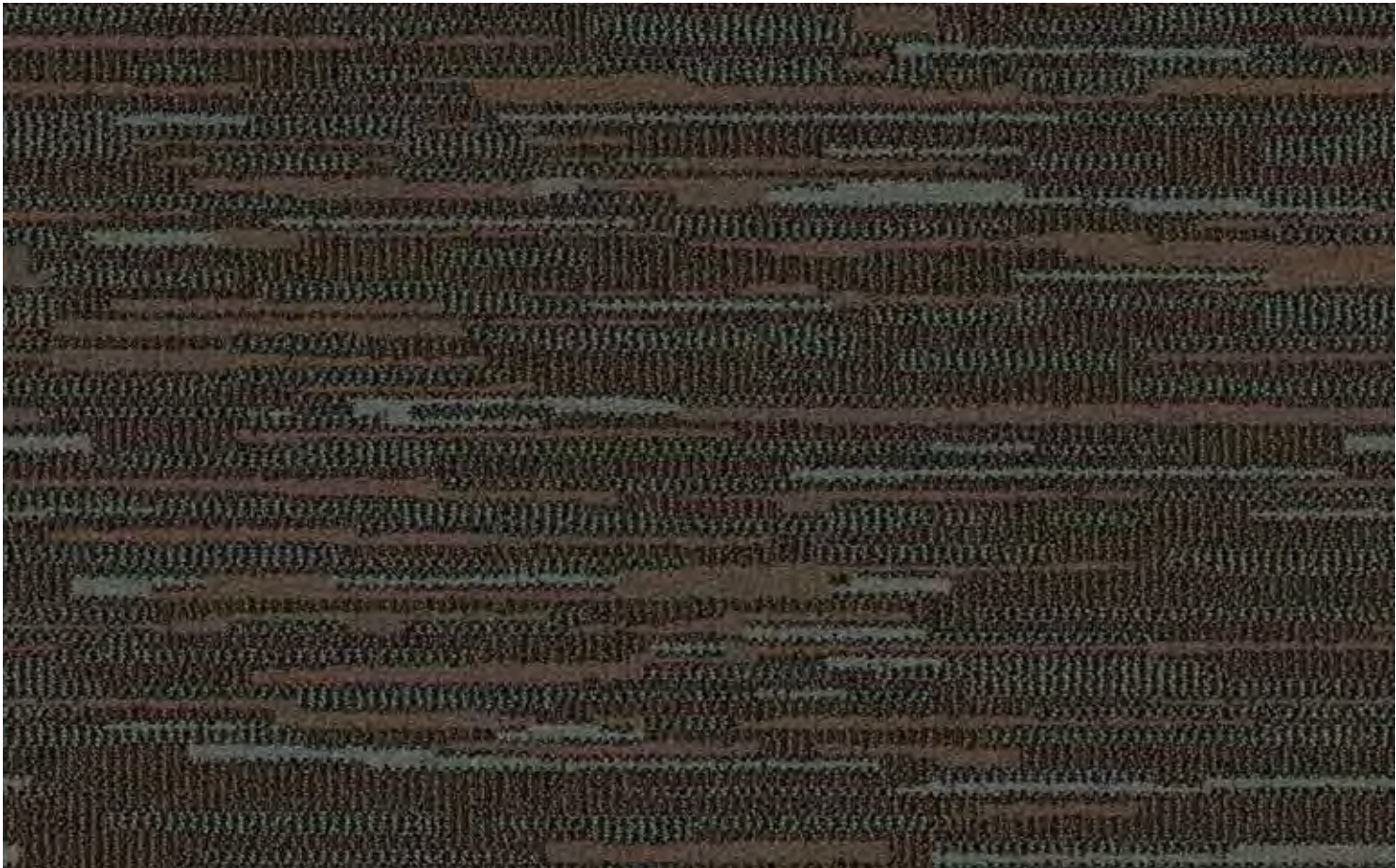
FLINT



A) 3238 B) 3142

MALACHITE





A) 3238 B) 3142

EXPLORE

FRACTURE

CONSTRUCTION	Infinity
PILE FIBER	100% SDN
GAUGE	1/10
STITCH RATE	16
PILE HEIGHT	.188
TUFTED PILE WEIGHT	36
DYE METHOD	SOLUTION
PRIMARY BACKING	WOVEN POLYPROPYLENE
SECONDARY BACKING	ACTION BAC
WIDTH IN FT.	12' 0"
DENSITY FACTOR	6,902
WEIGHT DENSITY FACTOR	248,459
WARRANTY	TEN YEAR LIMITED WEAR
SOIL & STAIN TREATMENT	SCOTCHGARD & STAIN RELEASE AVAILABLE
PATTERN REPEAT	24" x 80"
TESTING DATA	
ASTM E-648 Flooring Radiant Panel:	Class I
DOC-FFI-70 Methenamine Pill Test:	Passes AATCC 134
Electrostatic Propensity:	Less than 3.5 KV
E-662 Smoke Chamber:	Less than 450

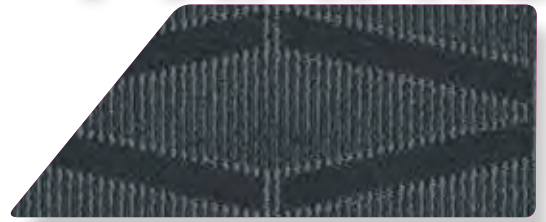
Available in 32 oz with 1000 syd minimum



PRAXIS



INK



CALLIGRAPHY



LITHO



STUDIO



TEMPERA



WOODCUT



ABSTRACT



FLOORS FOR
SIGNATURE
SPACES





A) 3507 B) 3137

INK



A) 3112 B) 3103

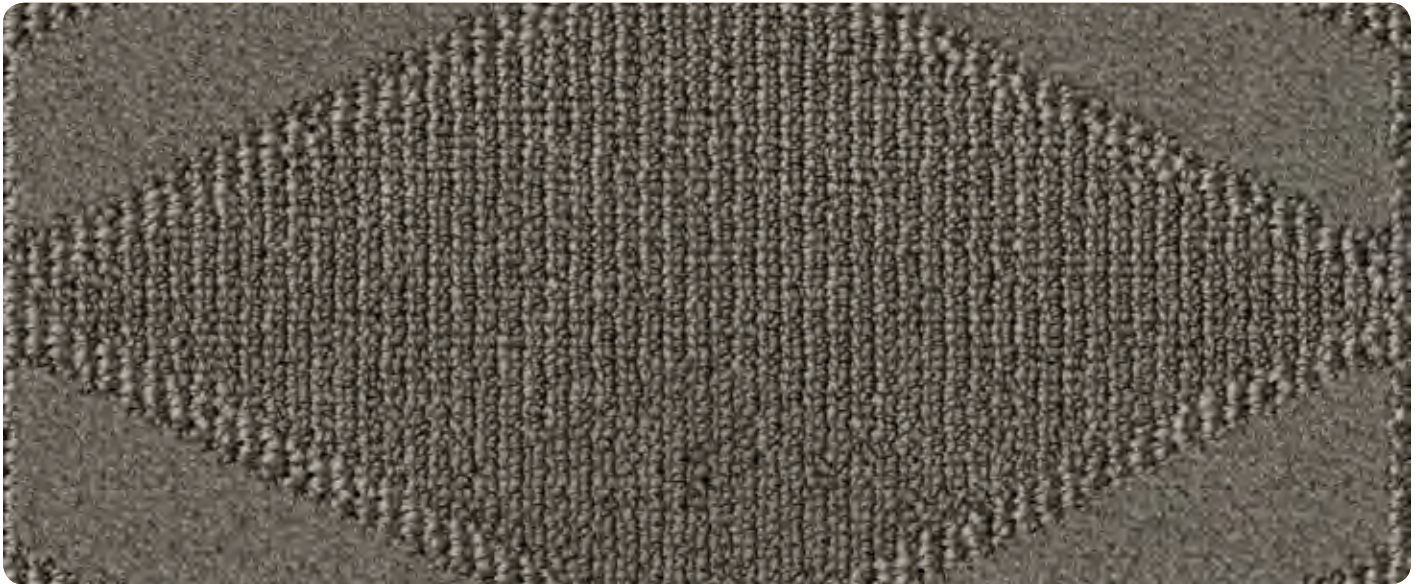
CALLIGRAPHY



A) 3143 B) 3120

LITHO





A) 3105 B) 3126

STUDIO



A) 3236 B) 3203

WOODCUT



A) 3140 B) 3264

TEMPERA

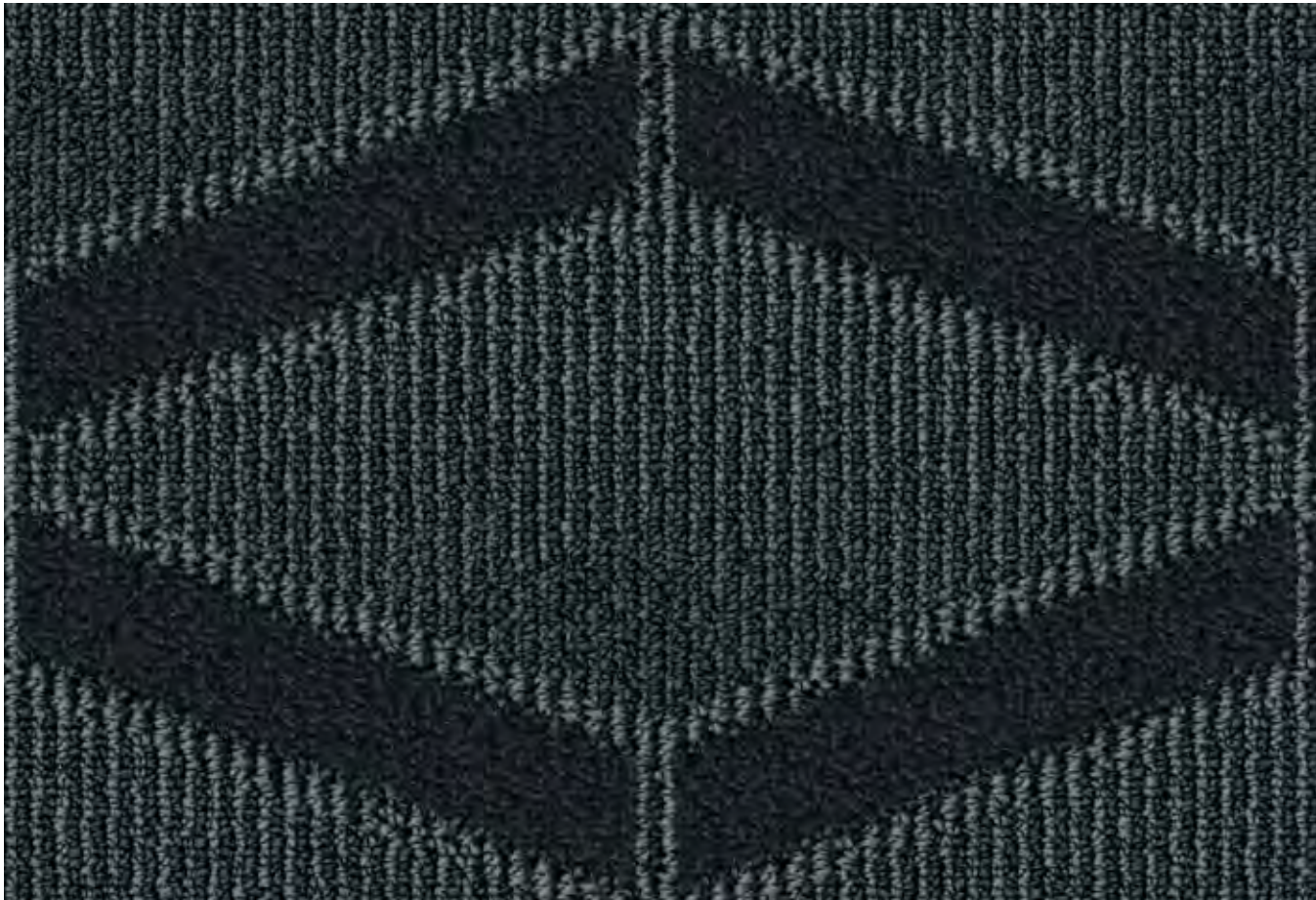




A) 3188 B) 3197

ABSTRACT





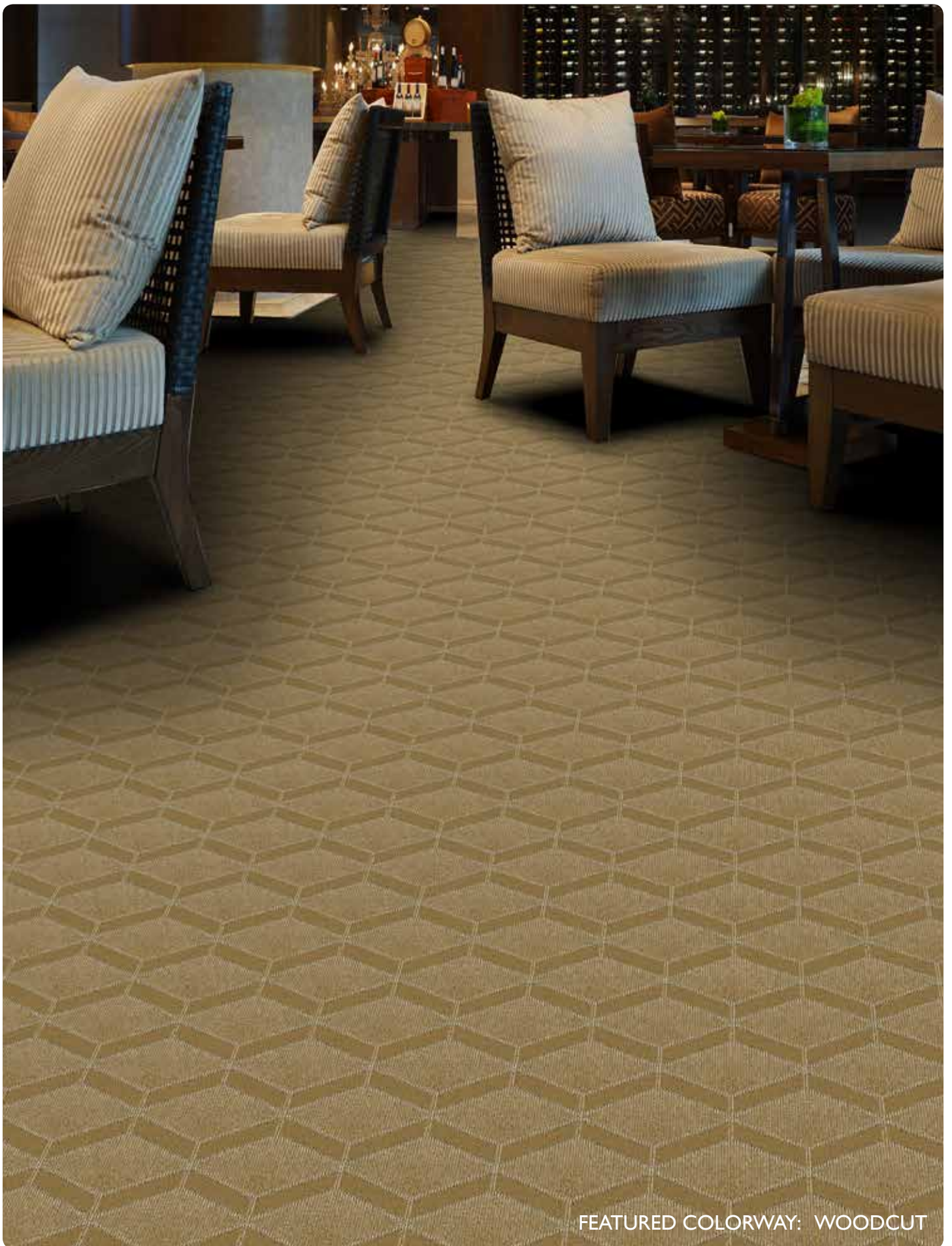
A) 3507 B) 3137

INK

PRAXIS

CONSTRUCTION	Infinity
PILE FIBER	100% SDN
GAUGE	1/10
STITCH RATE	14
PILE HEIGHT	0.171
TUFTED PILE WEIGHT	36
DYE METHOD	SOLUTION
PRIMARY BACKING	WOVEN POLYPROPYLENE
SECONDARY BACKING	ACTION BAC
WIDTH IN FT.	12' 0"
DENSITY FACTOR	7,564
WEIGHT DENSITY FACTOR	272,296
WARRANTY	TEN YEAR LIMITED WEAR
SOIL & STAIN TREATMENT	SCOTCHGARD & STAIN RELEASE AVAILABLE
PATTERN REPEAT	12" x 10.8"
TESTING DATA	
ASTM E-648 Flooring Radiant Panel:	Class I
DOC-FFI-70 Methenamine Pill Test:	Passes AATCC 134
Electrostatic Propensity:	Less than 3.5 KV
E-662 Smoke Chamber:	Less than 450

Available in 32 oz with 1000 syd minimum



FEATURED COLORWAY: WOODCUT



SNAPS



BEAM



DEW



FOG



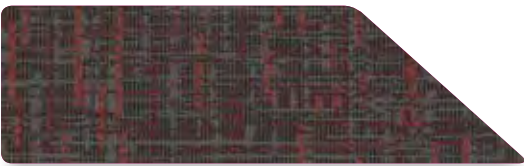
FORECAST



HAZE



INDIAN SUMMER



NIGHT FALL



RAIN BARREL



STRATUS



FLOORS FOR
SIGNATURE
SPACES



A) 002.246 B) 3188

BEAM



A) 3105 B) 3126

DEW



A) 3193 B) 3185

FOG





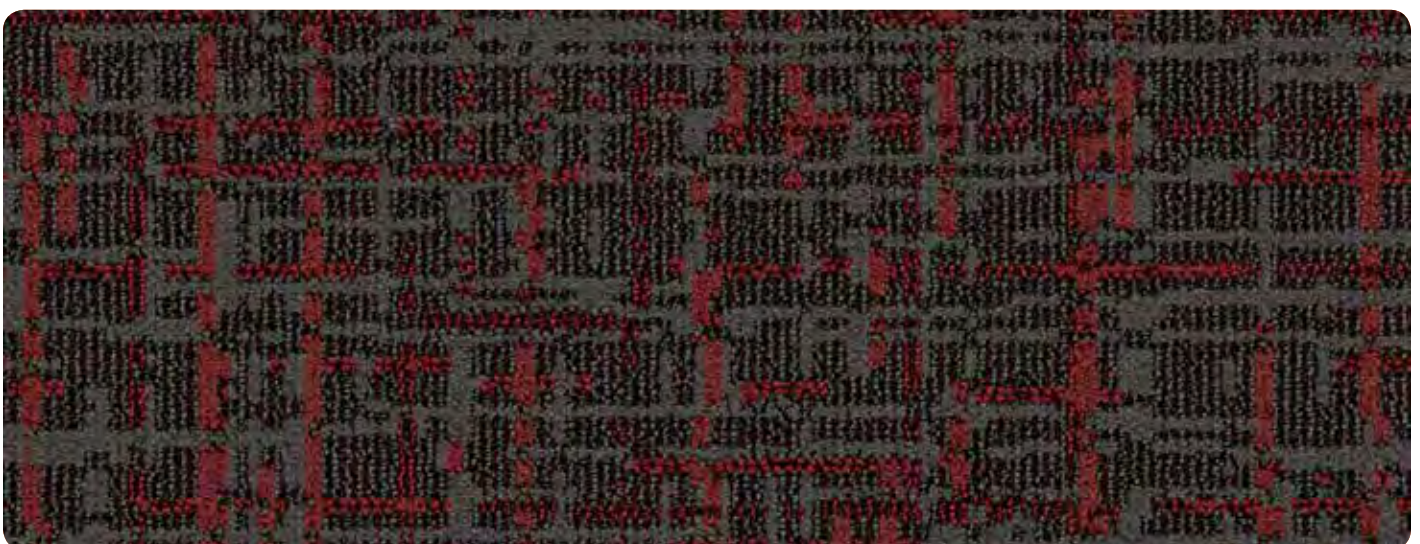
A) 126.236 B) 3123

FORECAST



A) 3250 B) 3299

HAZE



A) 3120 B) 3363

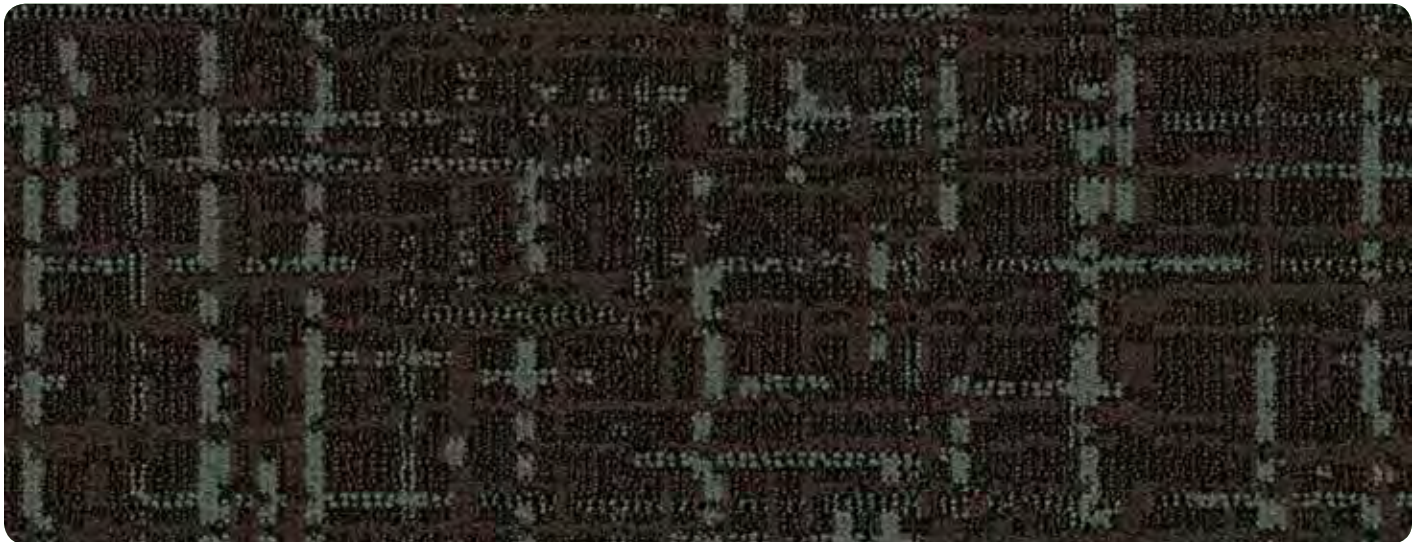
INDIAN SUMMER





A) 3112 B) 3108

NIGHT FALL



A) 3299 B) 3142

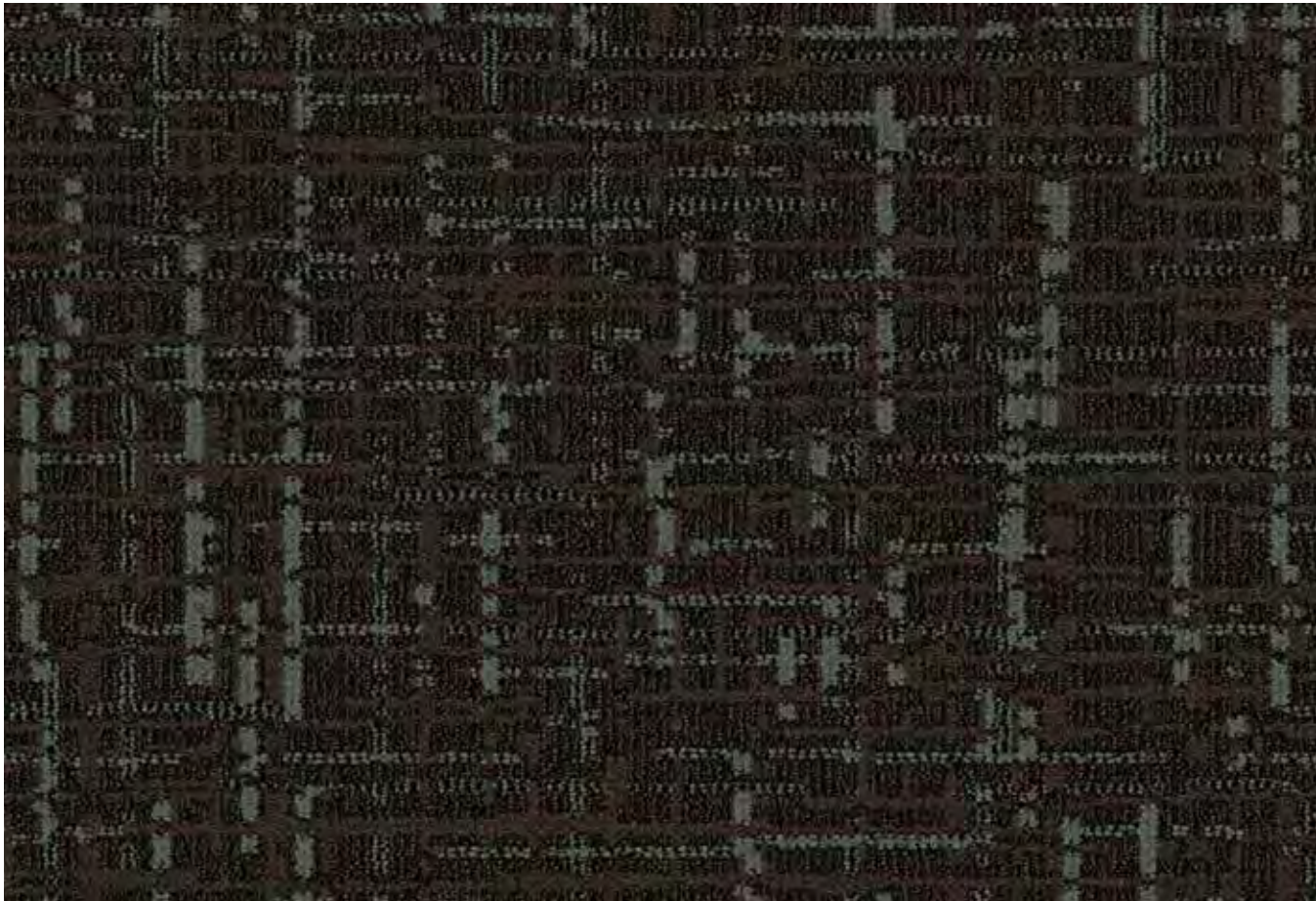
RAIN BARREL



A) 3507 B) 3137

STRATUS





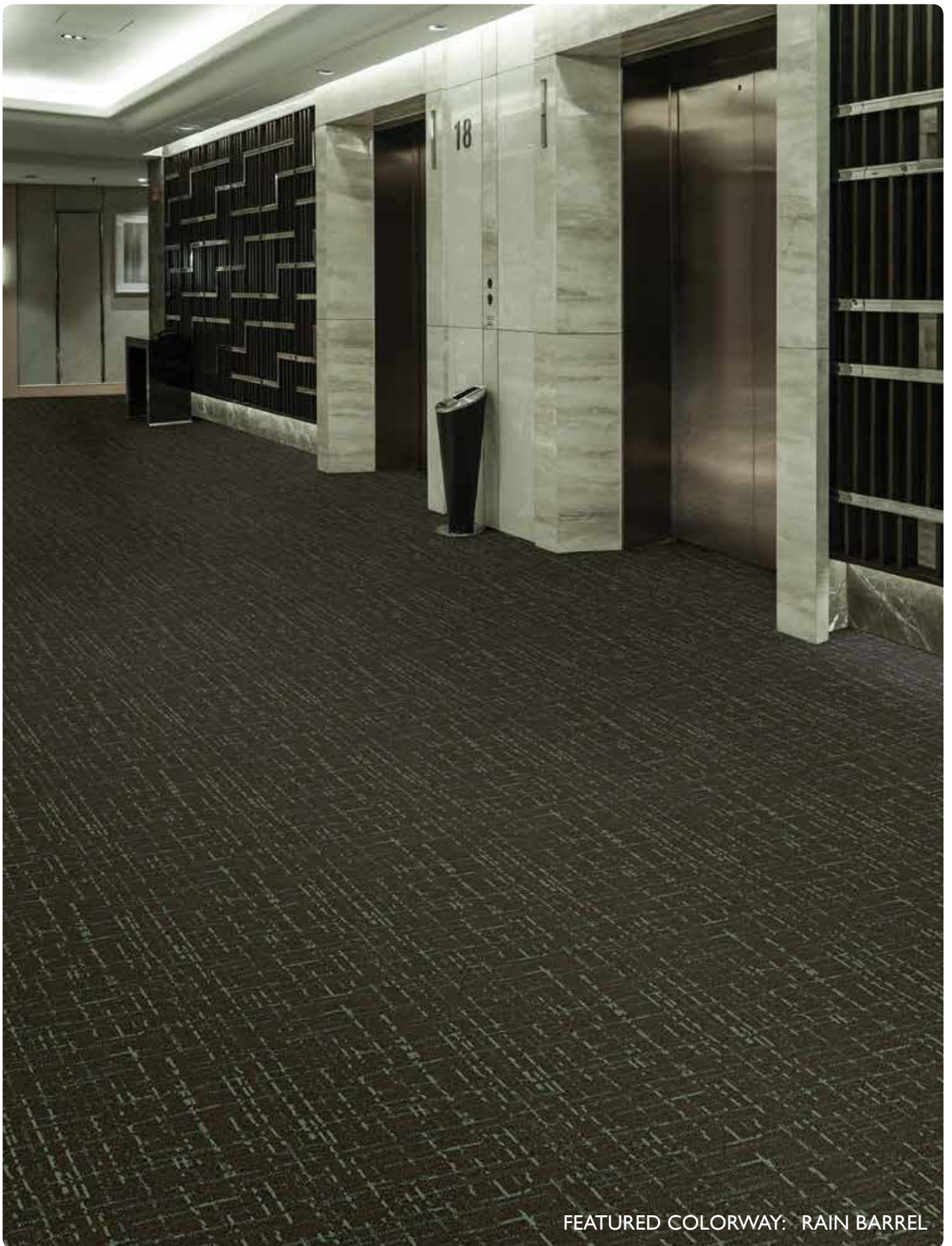
A) 3299 B) 3142

RAIN BARREL

SNAPS

CONSTRUCTION	HIGH PERFORMANCE CUT AND LOOP
PILE FIBER	100% SDN
STITCH RATE	15 SPI
PILE HEIGHT	.181avg.
TUFTED PILE WEIGHT	32 oz.
DYE METHOD	SOLUTION
PRIMARY BACKING	WOVEN POLYPROPYLENE
SECONDARY BACKING	ACTION BAC
WIDTH	12' (Up to 15' wide available)
DENSITY FACTOR	6,364
WEIGHT DENSITY FACTOR	203,648
WARRANTY	TEN YEAR LIMITED WEAR
SOIL & STAIN TREATMENT	SCOTCHGARD & STAIN RELEASE AVAILABLE
PATTERN REPEAT	24" W x 24" L
TESTING DATA	
ASTM E-648 Flooring Radiant Panel:	Class I
DOC-FFI-70 Methenamine Pill Test:	Passes AATCC 134
Electrostatic Propensity:	Less than 3.5 KV
E-662 Smoke Chamber:	Less than 450

Available in 36 oz with 1000 syd minimum



FEATURED COLORWAY: RAIN BARREL



SPECIFICATIONS ARE BASED ON AVERAGES FROM MANUFACTURING PROCESSES AND MAY VARY WITHIN NORMAL INDUSTRY TOLERANCES. MATERIAL SUPPLY AND /OR MANUFACTURING PROCESSES MAY NECESSITATE SPECIFICATION CHANGES WITHOUT NOTICE. SUCH VARIATIONS DO NOT AFFECT PRODUCT PERFORMANCE.

THIS CARPET IS MANUFACTURED AND RECOMMENDED FOR FLOOR COVERING USE ONLY. AS IN ALL QUALITY CARPET, COLORS ARE SUBJECT TO DYE LOT VARIATIONS. FOR OPTIMUM SIDE MATCH AND FINISHED SEAM APPEARANCE, THIS PRODUCT SHOULD BE INSTALLED WHENEVER POSSIBLE, WITH SEAMS RUNNING PERPENDICULAR TO MAJOR EXTERNAL (OUTSIDE) LIGHT SOURCES.

THE EQUIPMENT USED TO MANUFACTURE PATTERNED CARPET MAY CREATE VISIBLE LINES IN BOTH LENGTH AND WIDTH DIRECTIONS. THIS CHARACTERISTIC WILL NOT ALWAYS BE DETECTABLE IN SMALL SAMPLES AND IS NOT CONSIDERED A MANUFACTURING DEFECT.

AS WITH ALL PATTERNED CARPETS, PERFECT PATTERN MATCH MAY NOT BE OBTAINABLE AT SEAMS. TOLERANCES IN PATTERN REGISTRATION—BOW AND SKEW—ARE TO BE EXPECTED. ALL SEAMS AND CUT EDGES AT DOORS AND CLOSETS MUST BE SEAM SEALED.

CHAIR PADS ARE RECOMMENDED UNDER CHAIRS WITH ROLLERS TO PRESERVE APPEARANCE RETENTION, AVOID PREMATURE OR ACCELERATED WEAR, AND ACT AS A DETERRENT TOWARD DELAMINATION. SPECIAL BACKING SYSTEMS ARE AVAILABLE THAT DO NOT REQUIRE CHAIR PADS. WALK OFF MATS ARE RECOMMENDED AT BUILDING ENTRY WAYS TO REDUCE SOILING.

PLEASE CALL SIGNATURE'S TECHNICAL SERVICES DEPARTMENT AT **800-809-7086** FOR ANY QUESTIONS OR ASSISTANCE.

