

# Harmony Collection

## QUICK SHIP BEDDING PROGRAM



**The Harmony Collection quick ship bedding program** is designed for versatility, affordability and speed. These beautiful in stock fabrics are offered in a variety of colors to bring warmth and texture to your guest rooms. You can find the right fabric to complement an existing hotel scheme or design something new. Suitable for any part of the bed, they make beautiful bed skirts, bed scarves, coverlets, pillows and pillow shams.

Please call K M K Supply  
at (800) 325-3477 to order samples,  
request a quote or learn more.

# Harmony Collection • Quick Ship Bedding Program

## Whitman – FR

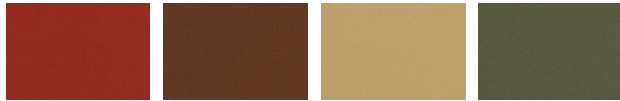


Chili Chocolate Ginger Moss



Navy Port Rattan

## Dante – FR

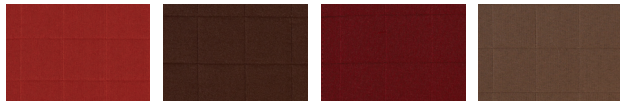


Chili Chocolate Ginger Moss



Navy Port Rattan

## Hawthorne – non FR



Brick Brown Burgundy Chocolate



Gold Navy Oatmeal Olive



Toast

## White Bedding – non FR



Carmel Stripe 3/26" Santa Barbara 3/8" Venus Stripe 1-3/8"



Deerpark Brentwood

FOB: Marietta, GA

Minimum Order: Full Case Qty

Orders Shipped in 10 - 15 working days after receipt of order.

Variations to sizes or fabrics requires a custom order quotation and will not ship in 10 - 15 working days. Refused shipments or cancelled orders returned are subject to a restocking fee (25%) and any applicable freight charges.

Prices subject to change with 30 day notification.

**K M K Supply Company**  
(800) 325-3477  
9070 Rosecrans Avenue  
Bellflower, CA 90706  
www.kmksupply.com

## DUST RUFFLES

### Whitman 5 Pleats 14", 16", 18" Drops

	Case Qty	W x L
Full XL	12/ctn	54 x 80
Queen	12/ctn	60 x 80
King	12/ctn	76 x 80

5 tailored pleats on corners at foot

Fabric Specs: Fitted Sheet boxsprings bedsack included, 4" deckings strips, all locked Stitched - High Quality

### Dante 5 Pleats 14", 16", 18" Drops

	Case Qty	W x L
Full XL	12/ctn	54 x 80
Queen	12/ctn	60 x 80
King	12/ctn	76 x 80

### Hawthorne Drop 12 - 14"

	Case Qty	W x L
Full XL	12/ctn	54 x 80
Queen	12/ctn	60 x 80
King	12/ctn	76 x 80

Fabric Specs: 5 Tailored Pleats, Fitted Sheet boxsprings bedsack included, 4" decking strips

### Hawthorne Drop 15 - 18"

	Case Qty	W x L
Full XL	12/ctn	54 x 80
Queen	12/ctn	60 x 80
King	12/ctn	76 x 80

## BED SCARVES

### Whitman

	Case Qty	W x L
Full	12/ctn	84 x 24
Queen	12/ctn	90 x 24
King	12/ctn	106 x 24

Fabric Specs: 2 ply (front and back) with polyester FR interlining, knife edge with 1/2" topstitched "faux" hem detail around edges.

### Dante

	Case Qty	W x L
Full	12/ctn	84 x 24
Queen	12/ctn	90 x 24
King	12/ctn	106 x 24

### Hawthorne

	Case Qty	W x L	Case Qty	W x L	Case Qty	W x L
Full	12/ctn	84 x 18	12/ctn	84 x 24	12/ctn	84 x 51
Queen	12/ctn	90 x 18	12/ctn	90 x 24	12/ctn	90 x 51
King	12/ctn	106 x 18	12/ctn	106 x 24	12/ctn	106 x 51

Fabric Specs: Single Ply with 1" hems

## BOLSTERS

### Whitman

W x L	Case Qty
8 x 24	9/ctn
8 x 36	9/ctn

### Dante

W x L	Case Qty
8 x 24	9/ctn
8 x 36	9/ctn

### Hawthorne

W x L	Case Qty
8 x 24	9/ctn
8 x 36	9/ctn

Fabric Specs: 1/4" self welt on each end, zipper closer, Polyurethane insert

## BED THROW

### Hawthorne

	Case Qty	W x L
Full XL	6/ctn	84 x 95
Queen	6/ctn	90 x 95
King	6/ctn	106 x 95

Fabric Specs: without pillow tuck, 15" drop, 1" hem, Seamless

## DUVET INSERT BLANKETS

### for triple sheeting or Duvet Covers

	Weight	Case Qty	W x L
Full XL	25 oz	10/ctn	84 x 95
Queen	27 oz	9/ctn	90 x 95
King	31 oz	8/ctn	106 x 95

Fabric Specs: 50% Polyester, 50% Cotton, 100% Conjugated, Siliconized Polyester, Squared Corners

## DUVET COVERS

### White Bed

	Case Qty	W x L
Full	20/ctn	83 x 98
Queen	20/ctn	89 x 98
King	20/ctn	105 x 98

Note: Add \$3.00 to pricing above for Brentwood Pattern

Fabric Specs: King Edge Duvet Cover, Square Corners on all Four Sides, Same Fabric on Both Sides, 55% Polyester, 45% Cotton